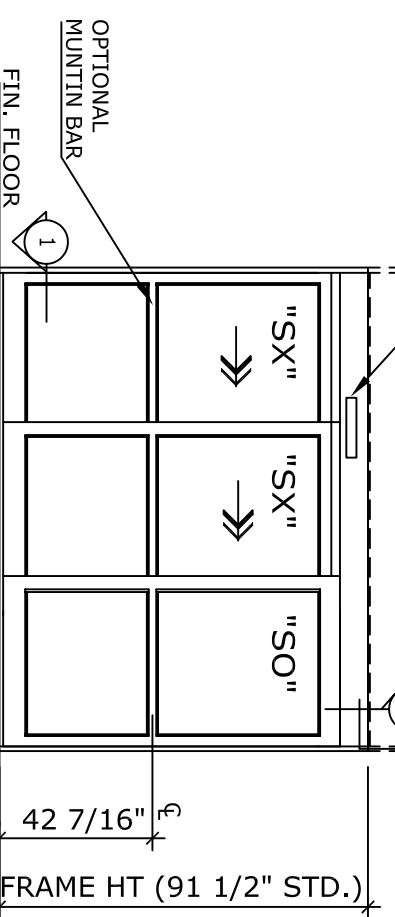
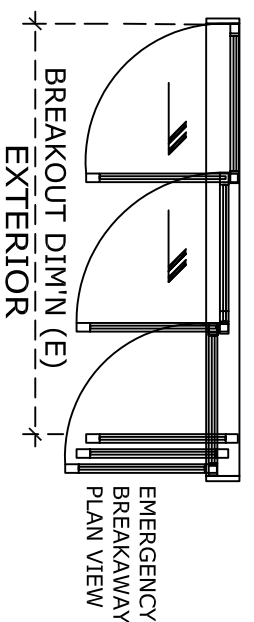


OVERALL FRAME WIDTH (VARIES)
 OPTIONAL TRANSOM FRAMING
 MOTION/PRESENCE INFRARED SENSOR
 ELECTRICAL SUPPLY 120 VAC, 60 HZ, 15A BY ELECTRICAL CONTRACTOR TO JUNCTION BOX



EXTERIOR ELEVATION



BREAKOUT DIM'N (E)
 EXTERIOR

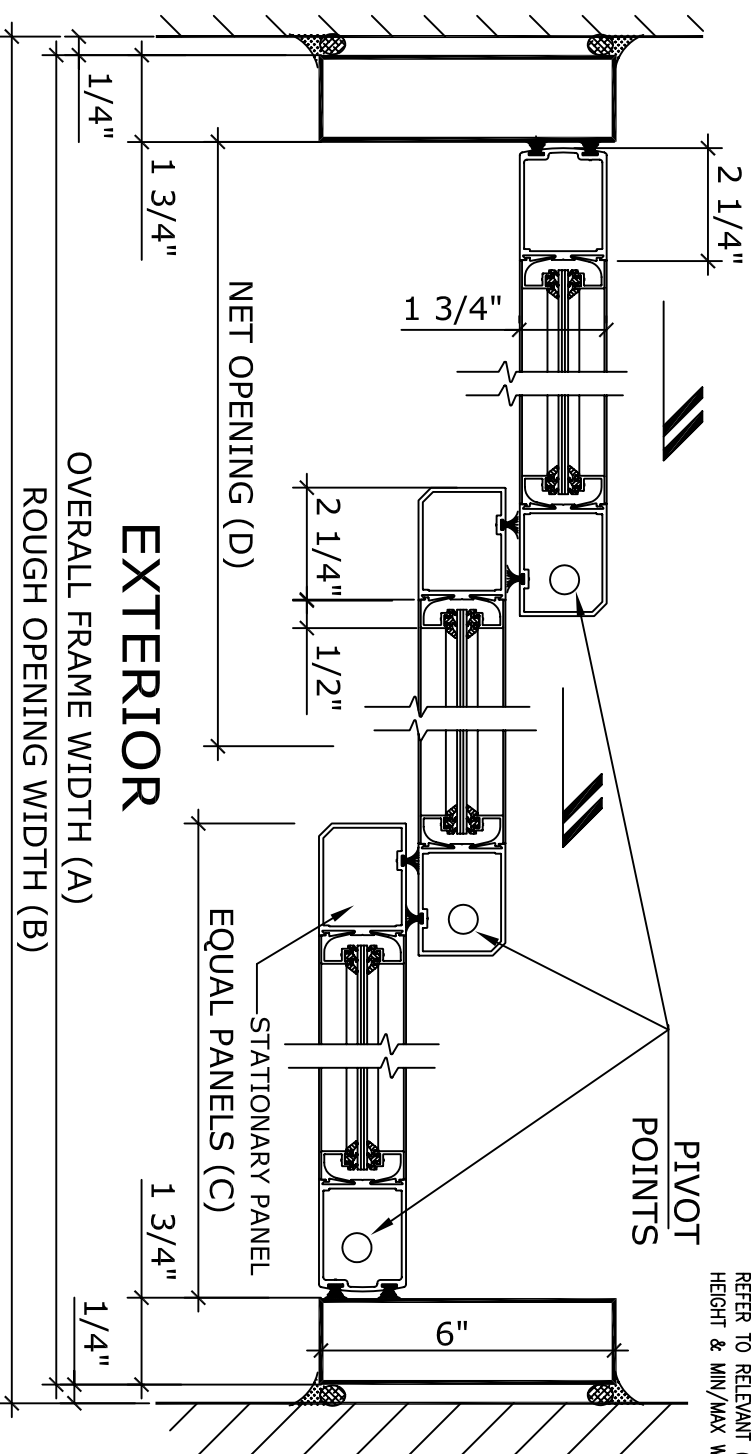
NOTE:
 AUTOMATIC SLIDING DOOR OPERATOR SHALL BE "DS-18" CUL USA APPROVED, CONFORMING TO UL STD. 325 & ANSI-BHMA STD. A156.10 CERTIFIED TO CAN. CSA STD. C22.2#24-93 AS MANUFACTURED BY HUNTER ACCESS TECHNOLOGIES INC.

STANDARD FINISH: ANODIZED, CLEAR; DARK BRONZE; SPECIAL FINISHES ARE AVAILABLE

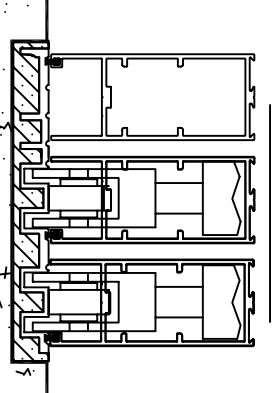
UNIT DESCRIPTION				
HUNTER DS-18-3-TFBR				
SX-SX-SO : OVERHEAD CONCEALED TELESCOPIC RIGHT HAND FULL BREAKOUT SLIDE DOOR SYSTEM, NARROW STILE DOORS. STD. PACKAGE SHALL INCLUDE AUTOMATIC OPERATOR, FRAME AND DOORS WITH MUNTIN, 4" BOTTOM RAILS WITH CONCEALED SWEEP, BRUSH-PILE WEATHER STRIPPING, EMERGENCY BREAKAWAY, MS LOCK, GLAZING STOPS FOR 1/4" TEMPERED GLASS, BOTTOM GUIDE SYSTEM SHALL BE PART OF FULL WIDTH THRESHOLD, DUAL DOORWAY SAFETY BEAMS, 3-POSITION SWITCH & MOTION/PRESENCE SENSORS.				

DOOR TYPE: DS18-3-TFBR-	OVERALL FRAME WIDTH	ROUGH OPENING WIDTH	EQUAL PANELS WIDTH	NET DOOR OPENING	BREAK OUT DIM'N
TFBR-6	72"	72 1/2"	24 11/16"	36 1/4"	59"
TFBR-7	84"	84 1/2"	28 11/16"	44 1/4"	71"
TFBR-8	96"	96 1/2"	32 11/16"	52 1/4"	83"
TFBR-9	108"	108-1/2"	36 11/16"	60 1/4"	95"
KEY (INCHES)	(B-1/2)	(A+1/2)	(A+2 1/16)/3	2(A/3-5 7/8)	(A-13)

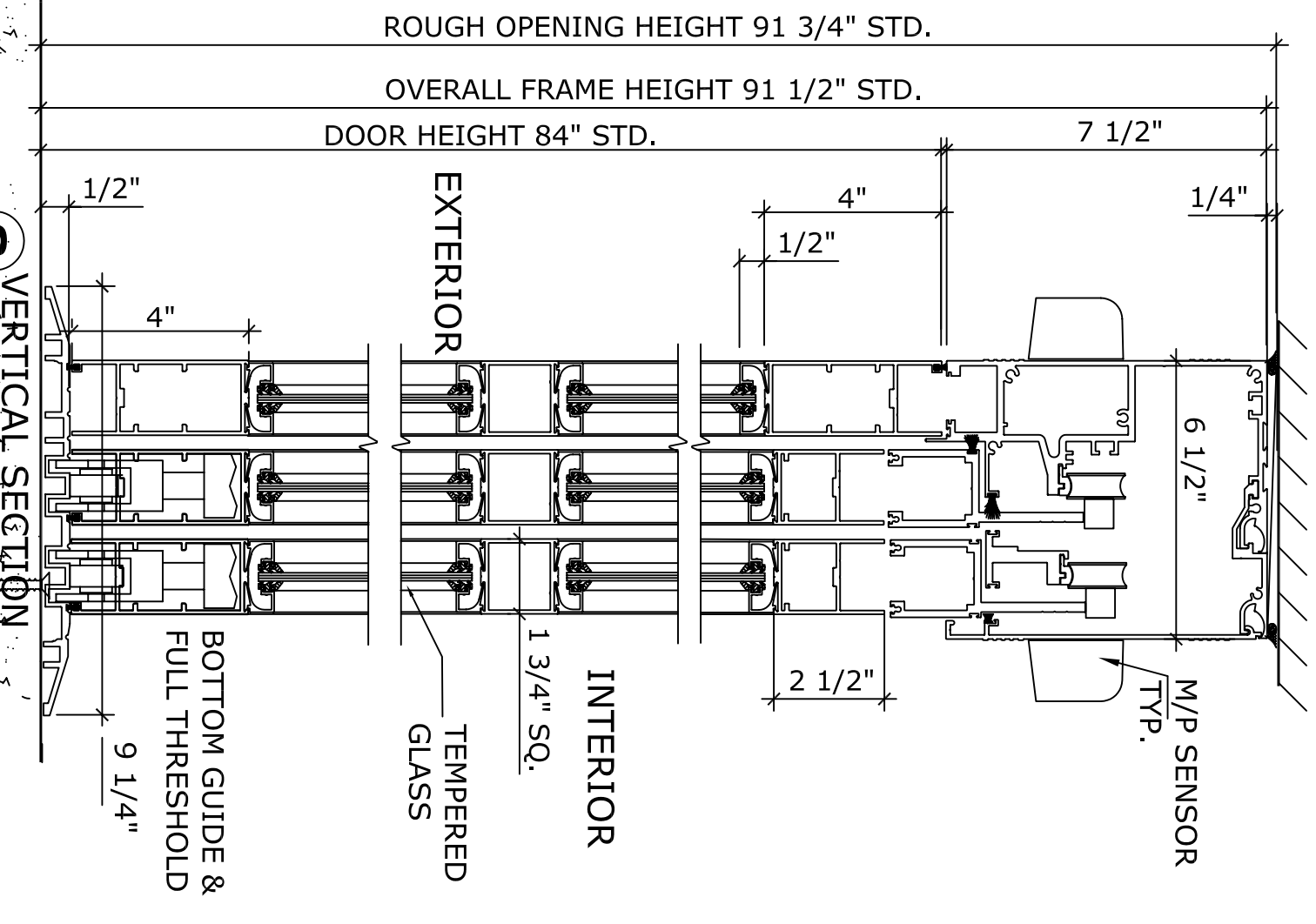
REFER TO RELEVANT (LOCAL, STATE, NATIONAL OR AHJ) BUILDING CODE FOR MIN DOOR HEIGHT & MIN/MAX WIDTH ALLOWABLE FOR EGRESS REQUIREMENT.



1 HORIZONTAL SECTION



RECESSED TRACK
 OPTIONAL



2 VERTICAL SECTION

APPLICATION:
 DS-18-3-TFBR, TELESCOPIC FULL BREAKOUT RIGHT HAND, AUTOMATIC SLIDING DOOR SYSTEM.

NOTE:
 HUNTER ACCESS TECHNOLOGIES INC. RESERVES THE RIGHT TO CHANGE & IMPROVE ITS PRODUCTS & SPECIFICATIONS WITHOUT NOTICE.

Hunter
 ACCESS TECHNOLOGIES INC.
 125 KENYON DRIVE
 SUITE #3
 LAKEWOOD, NJ 08701
 TEL: 732-942-6099
 FAX: 732-942-6033
 www.hunteraccesstechnologies.com

SHEET TITLE:		SHEET NO.	17
ARCHITECT:		SECTION	DS
CONTRACTOR:			
DETAIL SCALE			
DRAWN BY			
DATE			