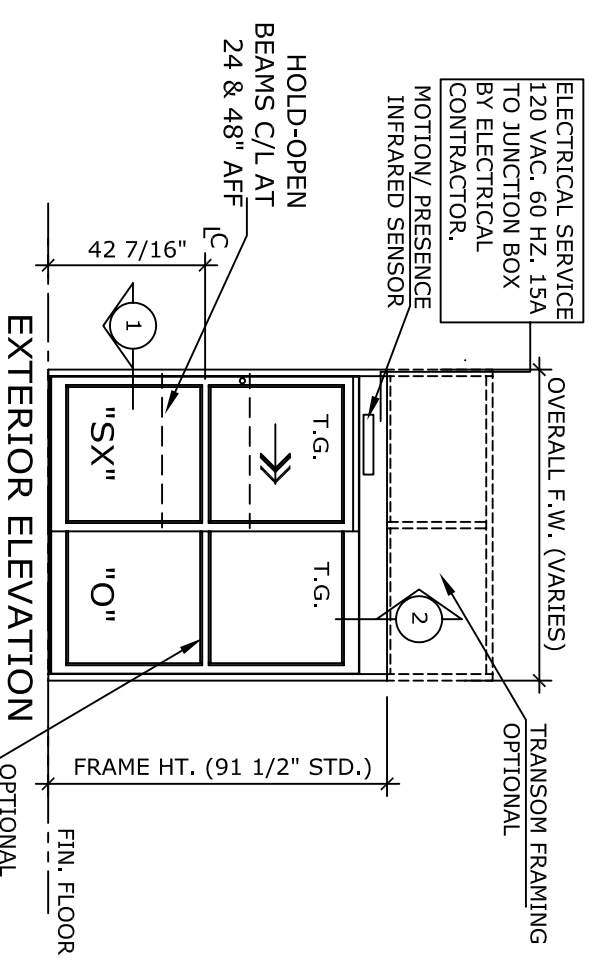


NOTE:
 AUTOMATIC SLIDING DOOR OPERATOR SHALL BE "DS-18" CUL USA APPROVED, CONFORMING TO UL STD. 325 & ANSI-BHMA STD. A156.10 CERTIFIED TO CAN. CSA STD. C22.2#24-93 AS MANUFACTURED BY HUNTER ACCESS TECHNOLOGIES INC.

APPLICATION:
 DS-18-1-FLR. FIXED SIDELITE RIGHT HAND, AUTOMATIC SLIDING DOOR SYSTEM.

ELECTRICAL SERVICE 120 VAC, 60 HZ, 15A TO JUNCTION BOX BY ELECTRICAL CONTRACTOR.
 MOTION/PRESENCE INFRARED SENSOR



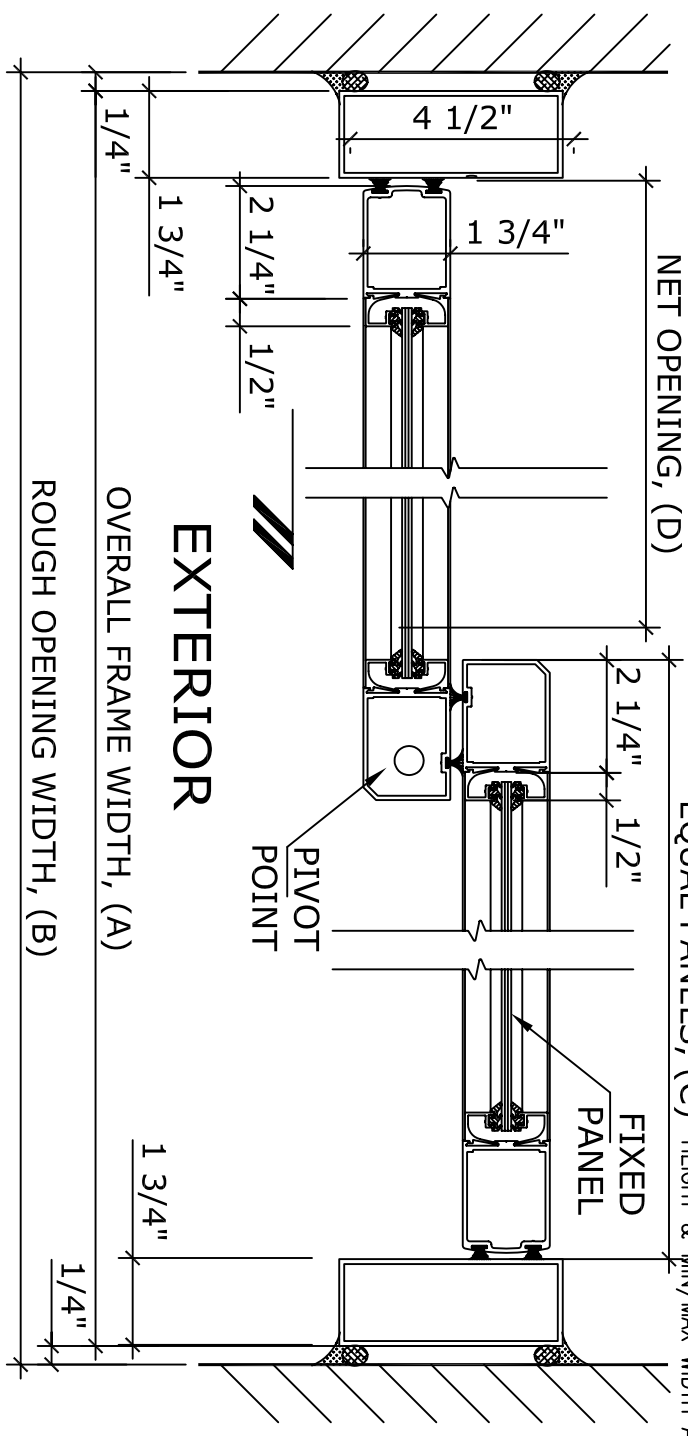
STANDARD FINISH: ANODIZED, CLEAR; DARK BRONZE; SPECIAL FINISHES ARE AVAILABLE

UNIT DESCRIPTION

HUNTER DS-18-1-FLR
 SX-O : OVERHEAD CONCEALED FIXED SIDELITE SINGLE SLIDE DOOR SYSTEM, NARROW STILE DOORS.
 STD. PACKAGE SHALL INCLUDE AUTOMATIC OPERATOR, FRAME AND DOORS WITH MUNTIN, 4" BOTTOM RAILS WITH CONCEALED SWEEP, BRUSH-PILE WEATHER STRIPPING, EMERGENCY BREAKAWAY, MS LOCK, GLAZING STOPS FOR 1/4" T. G., CONCEALED BOTTOM GUIDE IN 'J' MOLDING OF FIXED PANEL, DUAL DOORWAY SAFETY BEAMS, 3-POSITION SWITCH & MOTION/PRESENCE SENSORS.

DOOR TYPE:	OVERALL FRAME WIDTH	ROUGH OPENING WIDTH	EQUAL PANELS WIDTH	NET DOOR OPENING	BREAK OUT DIM'N
DS18-1-FLR-	84"	84 1/2"	41 9/16"	35 1/4"	38 7/8"
FLR-7	84"	84 1/2"	41 9/16"	35 1/4"	38 7/8"
FLR-8	96"	96 1/2"	47 9/16"	41 1/4"	44 7/8"
FLR-9	108"	108-1/2"	53 9/16"	47 1/4"	50 7/8"
KEY (INCHES)	(B-1/2)	(A+1/2)	(A/2-7/16)	(A/2-6 3/4)	(A/2-3 1/8)

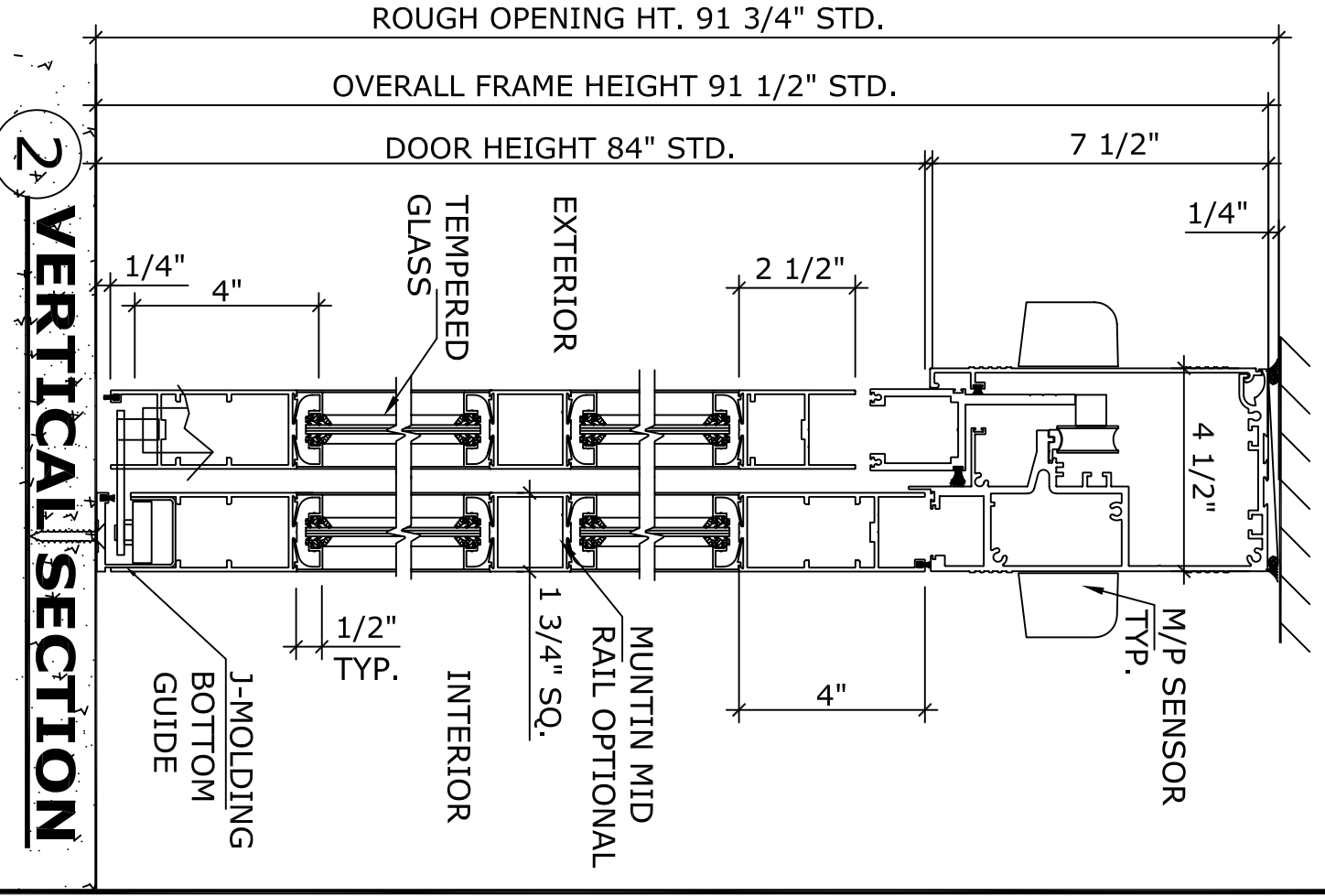
REFER TO RELEVANT (LOCAL, STATE, NATIONAL OR AHJ) BUILDING CODE FOR MIN DOOR HEIGHT & MIN/MAX WIDTH ALLOWABLE FOR EGRESS REQUIREMENT.



1 HORIZONTAL SECTION

NOTE:
 HUNTER ACCESS TECHNOLOGIES INC. RESERVES THE RIGHT TO CHANGE & IMPROVE IT'S PRODUCTS & SPECIFICATIONS WITHOUT NOTICE.

125 KENYON DRIVE
 SUITE #3
 LAKEWOOD, NJ 08701
 TEL. 732-942-6099
 FAX. 732-942-6033
 www.hunteraccesstechnologies.com



2 VERTICAL SECTION

SHEET TITLE:	SHEET NO. 5
ARCHITECT:	
CONTRACTOR:	
SCALE:	
DRAWN BY:	
DATE:	
SECTION	DS