

ELECTRICAL SERVICE
120 VAC, 60 HZ, 15A
TO JUNCTION BOX
BY ELECTRICAL
CONTRACTOR.

MOTION/PRESENCE
INFRARED SENSOR

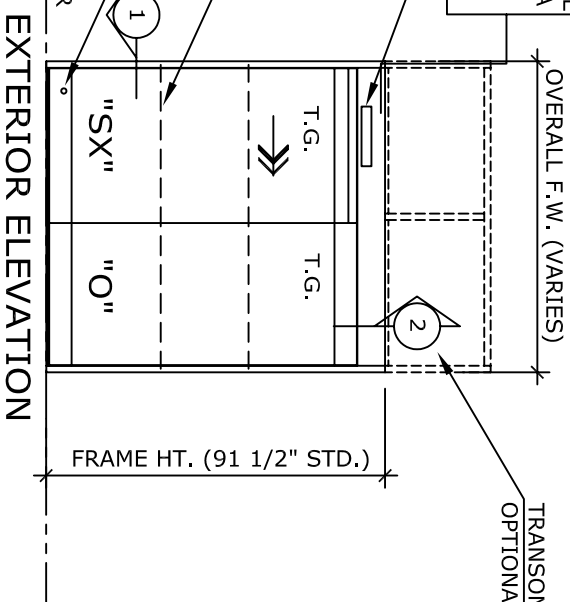
HOLD-OPEN
BEAMS C/L AT
24 & 48" AFF

M.S. LOCK

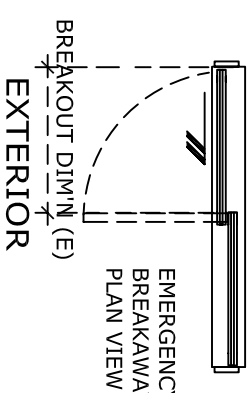
FIN. FLOOR

OVERALL F.W. (VARIES)

OPTIONAL
TRANSOM FRAMING



EXTERIOR ELEVATION



EMERGENCY
BREAKAWAY
PLAN VIEW

NOTE:
AUTOMATIC SLIDING DOOR OPERATOR SHALL BE "DS-18" CUL USA APPROVED, CONFORMING TO UL STD. 325 & ANSI-BHMA STD. A156.10 CERTIFIED TO CAN. CSA STD. C22.2#24-93 AS MANUFACTURED BY HUNTER ACCESS TECHNOLOGIES INC.

STANDARD FINISH: ANODIZED, CLEAR; DARK BRONZE;
SPECIAL FINISHES ARE AVAILABLE

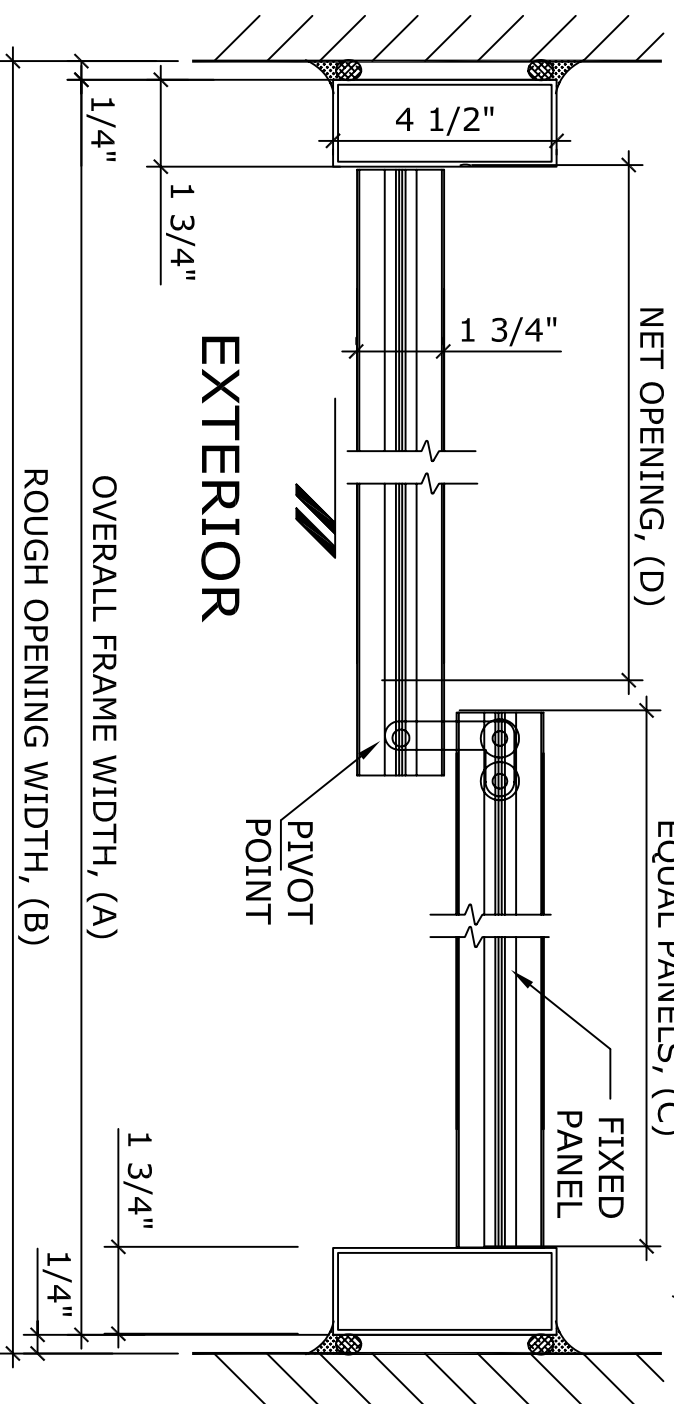
UNIT DESCRIPTION

HUNTER DS-18-1-GR

SX-0 : OVERHEAD CONCEALED FIXED SIDELITE SINGLE SLIDE DOOR SYSTEM, ALL GLASS STILE DOORS. STD. PACKAGE SHALL INCLUDE AUTOMATIC OPERATOR, FRAME AND DOORS, 5 5/8" HORIZONTAL RAILS WITH SWEEPS, BRUSH-PILE WEATHER STRIPPING, EMERGENCY BREAKAWAY, GLAZING SHOES FOR 1/2" T.G., FLOOR LOCKING MS LOCK, CONCEALED BOTTOM GUIDE IN 'J' MOLDING OF FIXED PANEL, DUAL DOORWAY SAFETY BEAMS, 3-POSITION SWITCH & MOTION/PRESENCE SENSORS.

DOOR TYPE:	OVERALL FRAME WIDTH	ROUGH OPENING WIDTH	EQUAL PANELS WIDTH	NET DOOR OPENING	BREAK OUT DIM'N
DS18-1-GR-	A	B	C	D	E
GR-7	84"	84 1/2"	41"	38"	39 1/2"
GR-8	96"	96 1/2"	47"	44"	45 1/2"
GR-9	108"	108-1/2"	53"	50"	51 1/2"
KEY (INCHES)	(B-1/2)	(A+1/2)	(A/2-1)	(A/2-4)	(A/2-2 1/2)

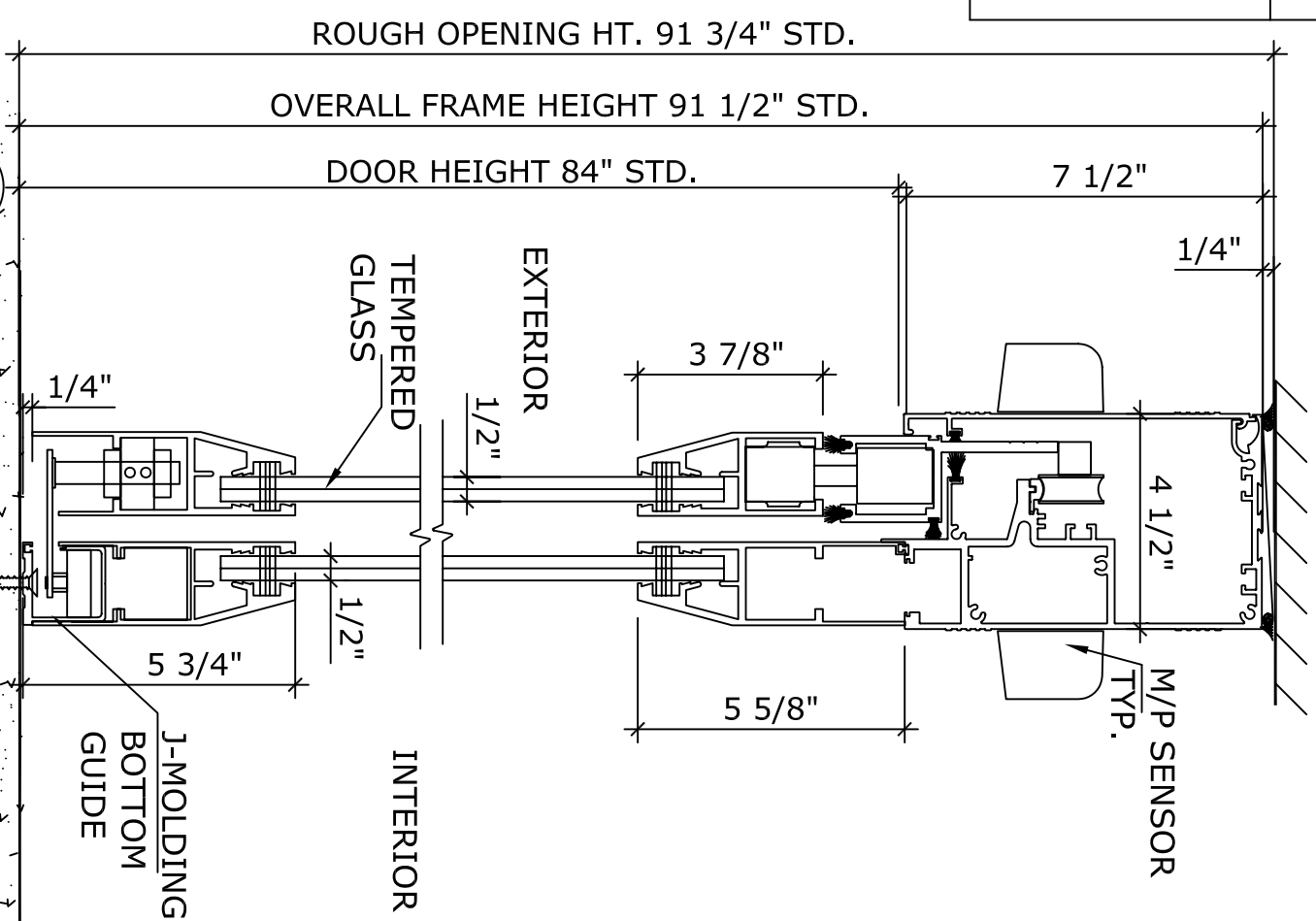
REFER TO RELEVANT (LOCAL, STATE, NATIONAL OR AHJ) BUILDING CODE FOR MIN DOOR HEIGHT & MIN/MAX WIDTH ALLOWABLE FOR EGRESS REQUIREMENT.



1 HORIZONTAL SECTION

NOTE:
HUNTER ACCESS TECHNOLOGIES INC. RESERVES THE RIGHT TO CHANGE & IMPROVE IT'S PRODUCTS & SPECIFICATIONS WITHOUT NOTICE.

APPLICATION:
DS-18-1-GR. ALL GLASS STILE, RIGHT HAND, AUTOMATIC SLIDING DOOR SYSTEM.



2 VERTICAL SECTION

SHEET TITLE: **8** SHEET NO.

ARCHITECT:

CONTRACTOR:

SCALE: DRAWN BY: DATE:

Hunter
ACCESS TECHNOLOGIES INC.

125 KENYON DRIVE
SUITE #3
LAKEWOOD, NJ 08701
TEL. 732-942-6099
FAX. 732-942-6033
www.hunteraccesstechnologies.com

SECTION **DS**