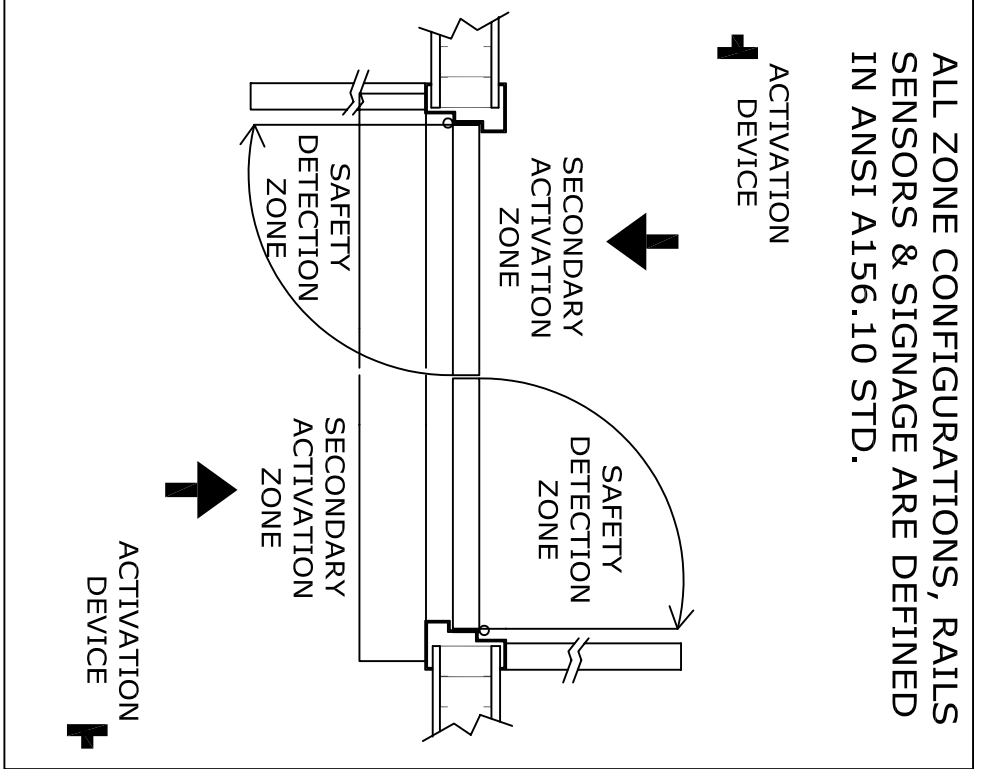


ALL ZONE CONFIGURATIONS, RAILS SENSORS & SIGNAGE ARE DEFINED IN ANSI A156.10 STD.

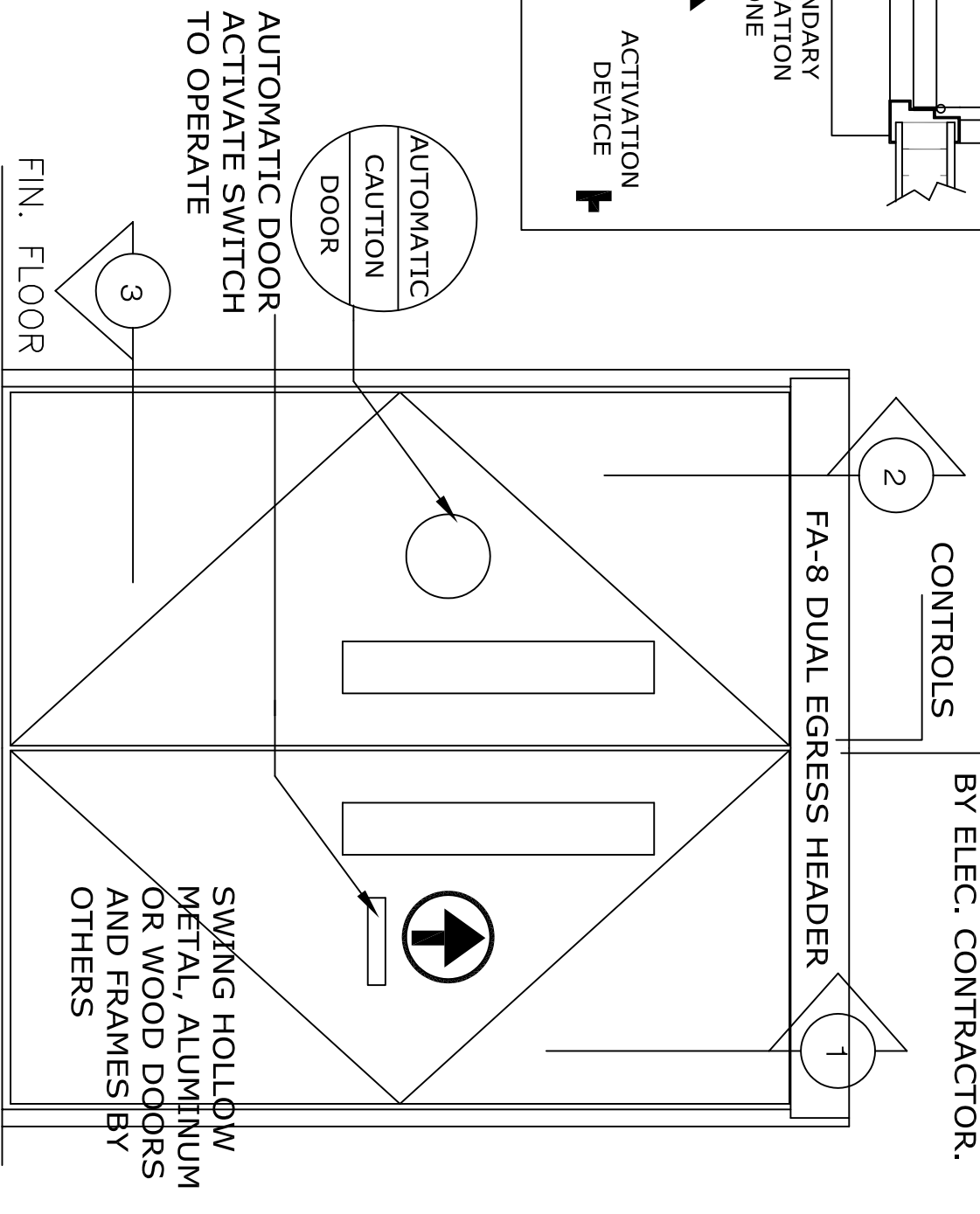


**APPLICATION:**  
FA-8-DE-3 FULLY AUTOMATIC DUAL EGRESS RIGHT HAND.

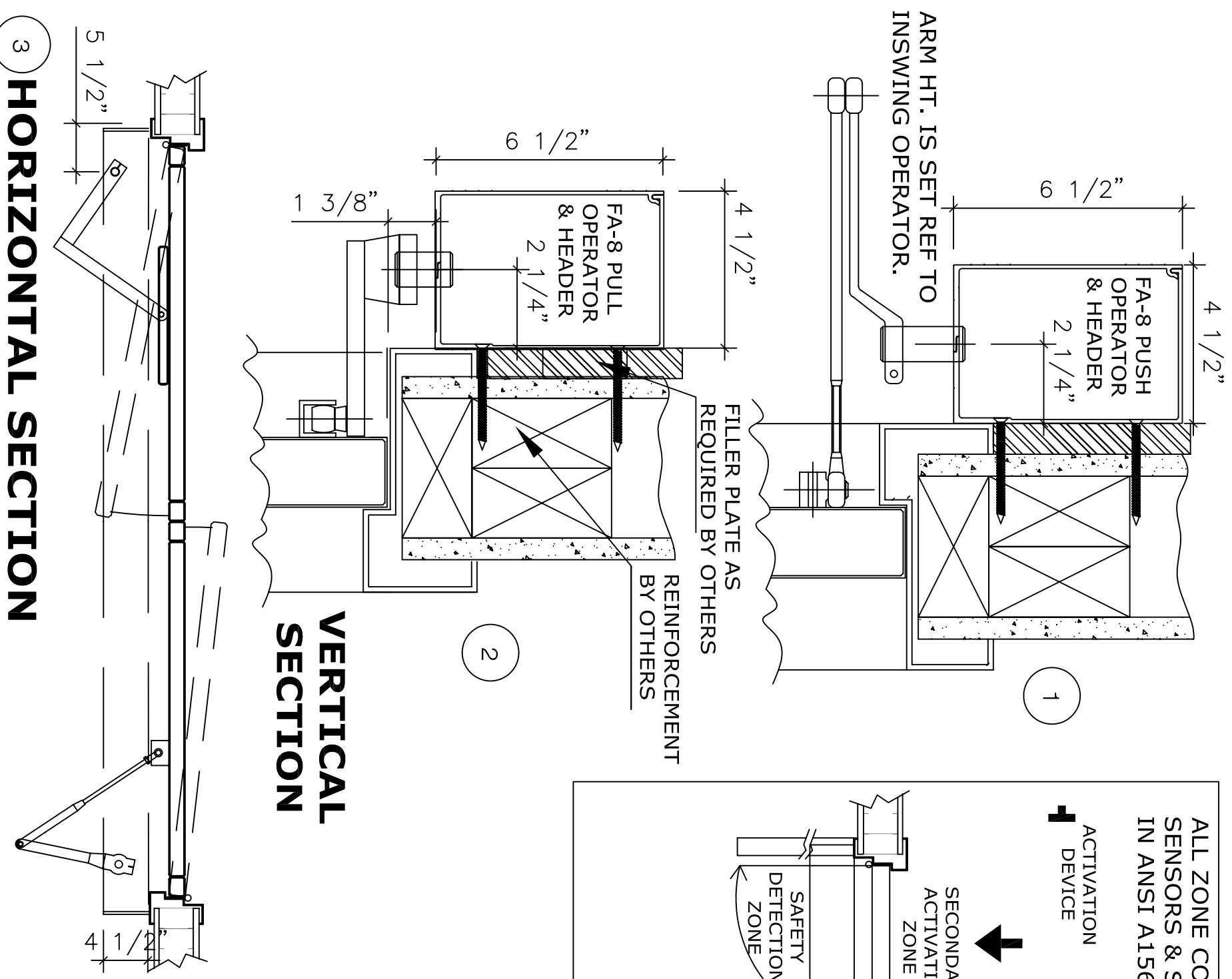
**NOTE:**  
AUTOMATIC SWING DOOR OPERATOR SHALL BE "FA-8" CETL USA APPROVED, CONFORMING TO UL STD. 325 & ANSI-BHMA STD. A156.10 CERTIFIED TO CAN. CSA STD. C22.2#247 AS MANUFACTURED BY HUNTER ACCESS TECHNOLOGIES INC. COMPLETE DOOR SYSTEM MUST MEET ANSI A156.10 STANDARDS

STANDARD FINISH: CLEAR ANODIZE, DARK BRONZE, SPECIAL FINISHES ARE AVAILABLE

120V AC, 60HZ, 15A.  
BY ELEC. CONTRACTOR.



**ELEVATION**



**VERTICAL SECTION**

**HORIZONTAL SECTION**

**NOTE:**  
HUNTER ACCESS TECHNOLOGIES INC. RESERVES THE RIGHT TO CHANGE & IMPROVE ITS PRODUCTS & SPECIFICATIONS WITHOUT NOTICE.

**Hunter**  
ACCESS TECHNOLOGIES INC.  
125 KENYON DRIVE  
SUITE #3  
LAKEWOOD, NJ 08701  
TEL: 732-942-6099  
FAX: 732-942-6033  
www.hunteraccess technologies.com

SHEET TITLE:		SHEET NO.	
ARCHITECT:		<b>13</b>	
CONTRACTOR:		SECTION	
SCALE:	DRAWN BY:	DATE:	<b>FA</b>