

**APPLICATION:**  
 HA-8-2-4 LOW ENERGY OPERATOR  
 LEFT HAND PULL.

**NOTE:**  
 AUTOMATIC SWING DOOR OPERATOR SHALL BE "HA-8" CETL USA APPROVED, CONFORMING TO UL STD. 325 & ANSI-BHMA STD. A156.19 CERTIFIED TO CAN. CSA STD. C22.2#247 AS MANUFACTURED BY HUNTER ACCESS TECHNOLOGIES INC.  
 32" CLEAR OPENING REQUIRED TO MEET ADA REQUIREMENT.

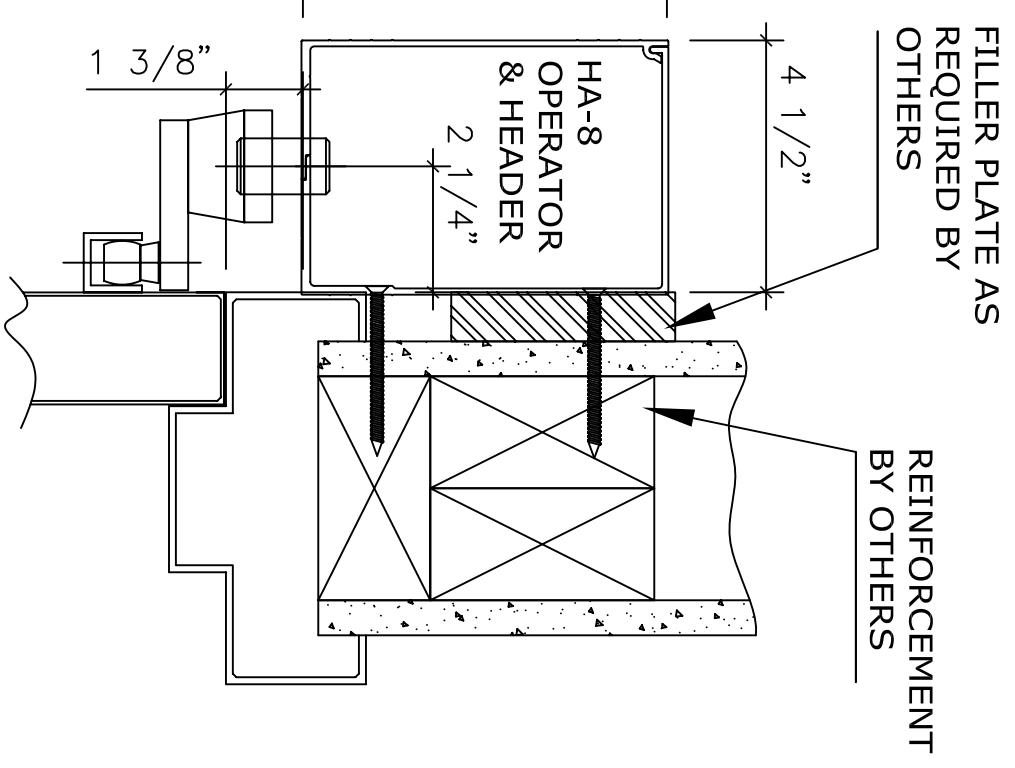
**STANDARD FINISH:** CLEAR ANODIZE, DARK BRONZE,  
 SPECIAL FINISHES ARE AVAILABLE

120V AC. 60HZ. 15A.  
 BY ELEC. CONTRACTOR.

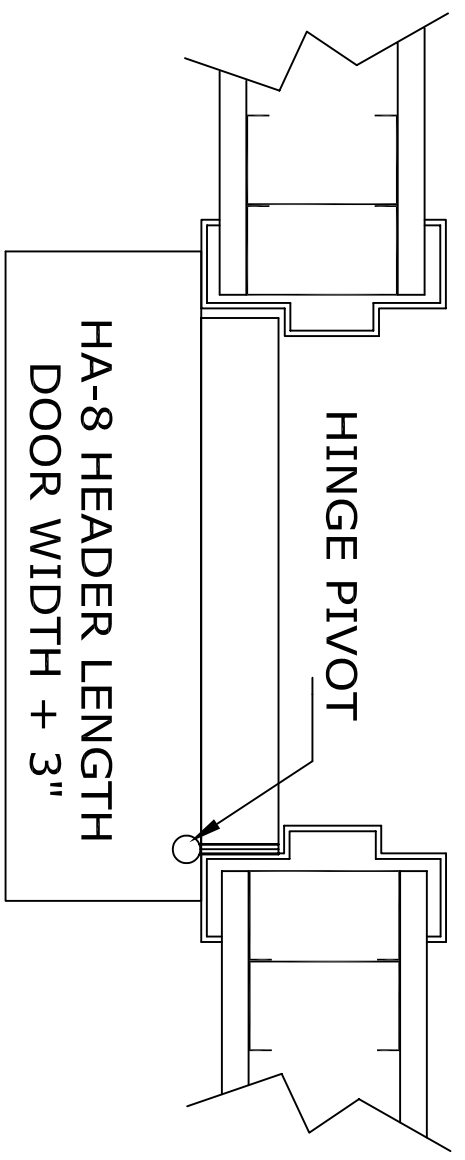
CONTROLS

HA-8 HEADER

SWING HOLLOW METAL, ALUMINUM OR WOOD DOORS AND FRAMES BY OTHERS



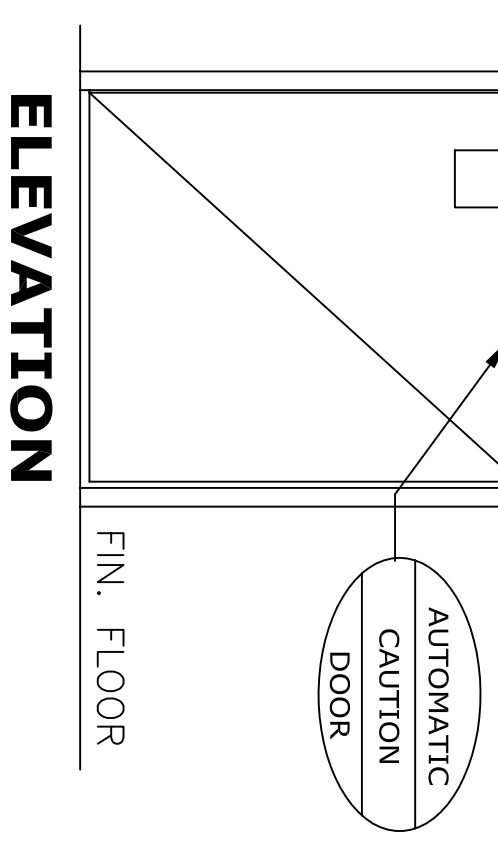
**VERTICAL SECTION**



**PLAN**

INTERIOR

**HORIZONTAL SECTION**



**ELEVATION**

**NOTE:**  
 HUNTER ACCESS TECHNOLOGIES INC. RESERVES THE RIGHT TO CHANGE & IMPROVE IT'S PRODUCTS & SPECIFICATIONS WITHOUT NOTICE.



125 KENYON DRIVE  
 SUITE #3  
 LAKEWOOD, NJ 08701  
 TEL: 732-942-6099  
 FAX: 732-942-6033  
 www.hunteraccesstechnologies.com

SHEET TITLE:		SHEET NO.	
ARCHITECT:		<b>5</b>	
CONTRACTOR:		SECTION	
SCALE:	DRAWN BY:	DATE:	<b>HA</b>