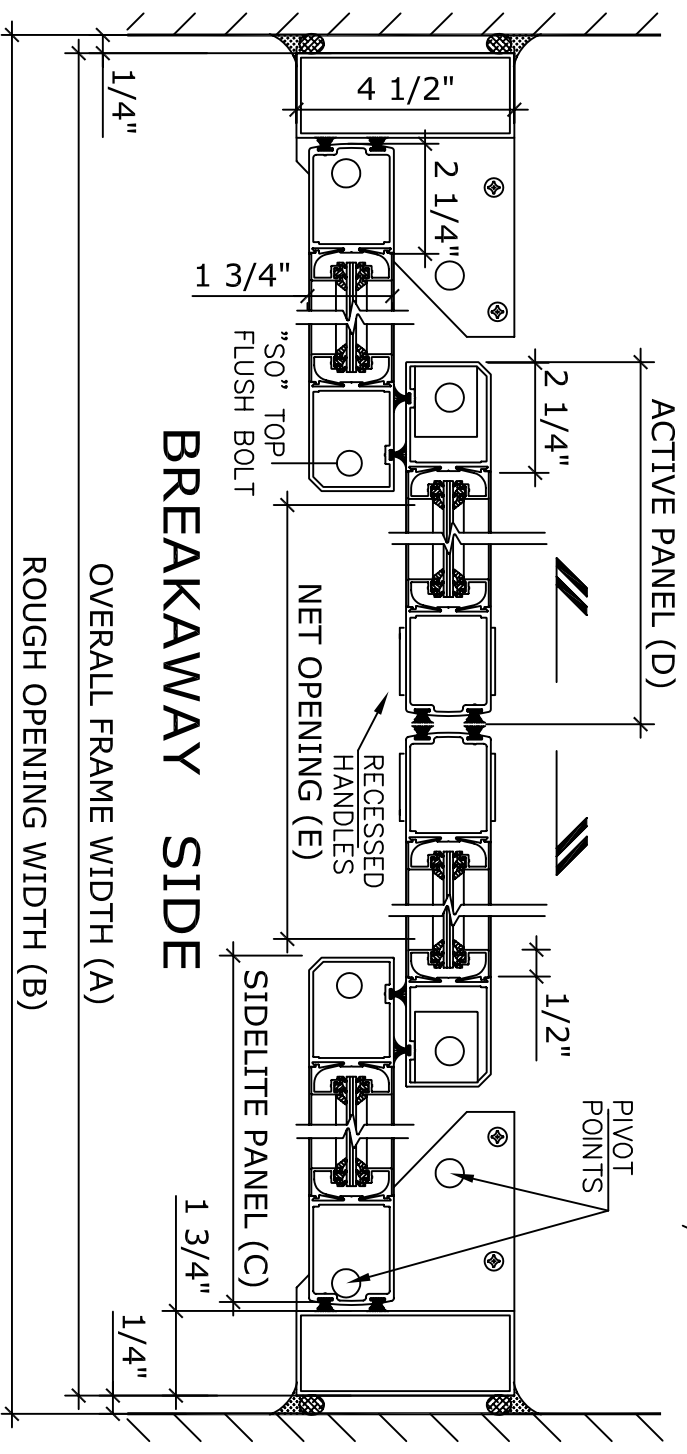


UNIT DESCRIPTION	
HUNTER IC-18-2-TK	
SO-SX-SX-SO: TRACKLESS OVERHEAD CONCEALED F.B.O. BI-PART NARROW STILE MANUAL DOOR SYSTEM.	
STD. PACKAGE SHALL INCLUDE LOW PROFILE HEADER, FRAME AND DOORS WITH MUNTIN, 4" BOTTOM RAILS WITH CONCEALED SWEEP, BRUSH-PILE WEATHER STRIPPING, EMERGENCY BREAKAWAY, GLAZING STOPS FOR 1/4" T.G. AND RECESSED HANDLES. BOTTOM GUIDE SYSTEM SHALL BE TRACKLESS.	

DOOR TYPE:	OVERALL FRAME A WIDTH	ROUGH OPENING B WIDTH	SIDELITE PANEL C WIDTH	ACTIVE PANEL D WIDTH	NET DOOR E OPENING	BREAK OUT F DIMN
IC18-2-TK-						
TK-10	120"	120 1/2"	27 1/2"	33 1/2"	44 1/4"	107 1/2"
TK-12	144"	144 1/2"	33 1/2"	39 1/2"	56 1/4"	131 1/2"
TK-14	168"	168-1/2"	39 1/2"	45 1/2"	68 1/4"	155 1/2"
KEY (INCHES)	(B-1/2)	(A+1/2)	(A/4+2 1/2)	(A/4+3 1/2)	(A/2-15 3/4)	(A-12 1/2)

REFER TO RELEVANT (LOCAL, STATE, NATIONAL OR AHJ) BUILDING CODE FOR MIN DOOR HEIGHT & MIN/MAX WIDTH ALLOWABLE FOR EGRESS REQUIREMENT.

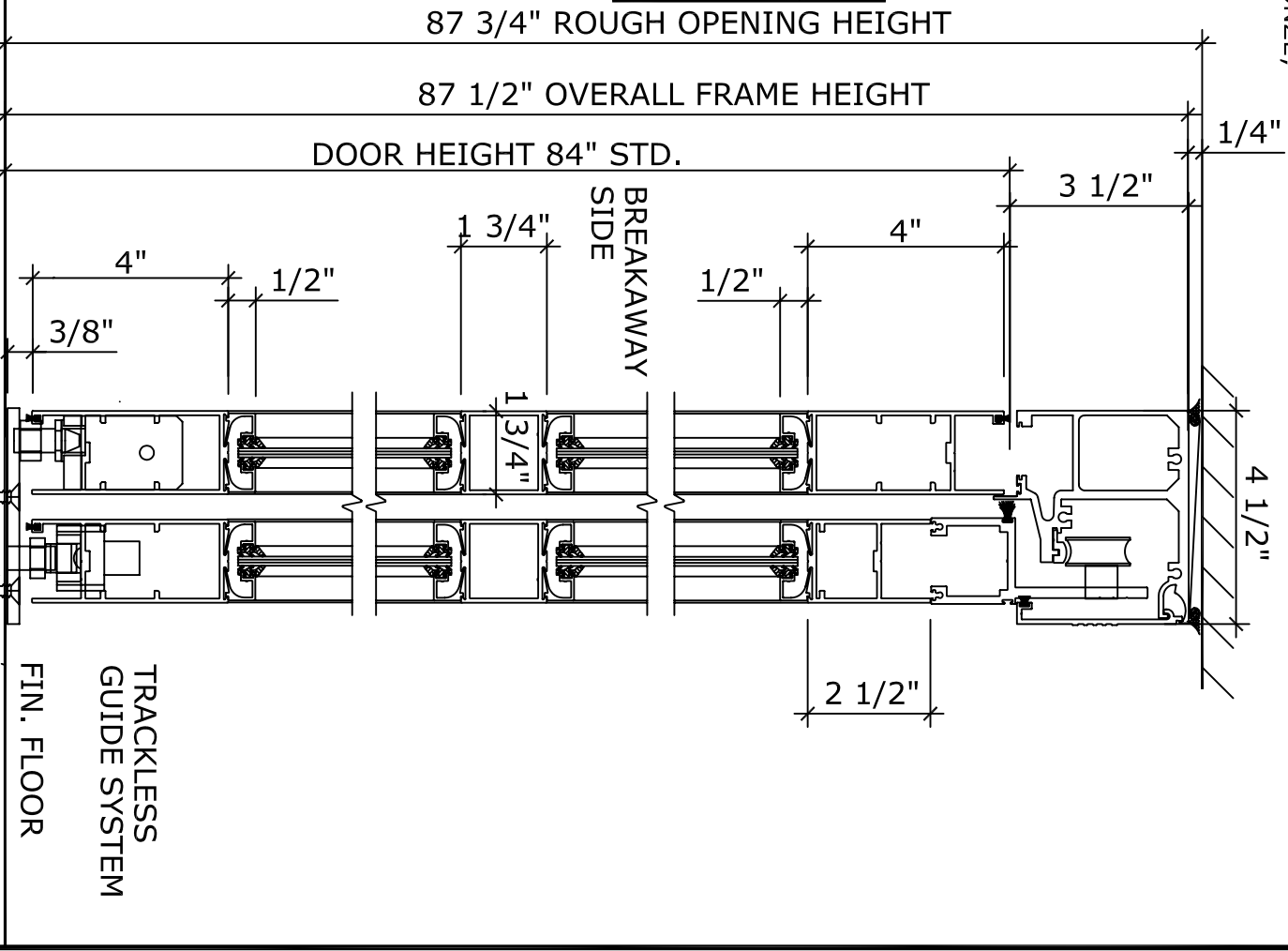


1 HORIZONTAL SECTION

NOTE:
HUNTER ACCESS TECHNOLOGIES INC. RESERVES THE RIGHT TO CHANGE & IMPROVE ITS PRODUCTS & SPECIFICATIONS WITHOUT NOTICE.



125 KENYON DRIVE
SUITE #3
LAKEWOOD, NJ 08701
TEL. 732-942-6099
FAX: 732-942-6033
www.hunteraccesstechnologies.com



2 VERTICAL SECTION

APPLICATION:
IC-18-2-TK. TRACKLESS BI-PART, FBO INTENSIVE CARE UNIT SLIDER SYSTEM.

SHEET TITLE:		SHEET NO. 3	
ARCHITECT:		SECTION	
CONTRACTOR:		DRAWN BY	
DETAIL SCALE		DATE	