

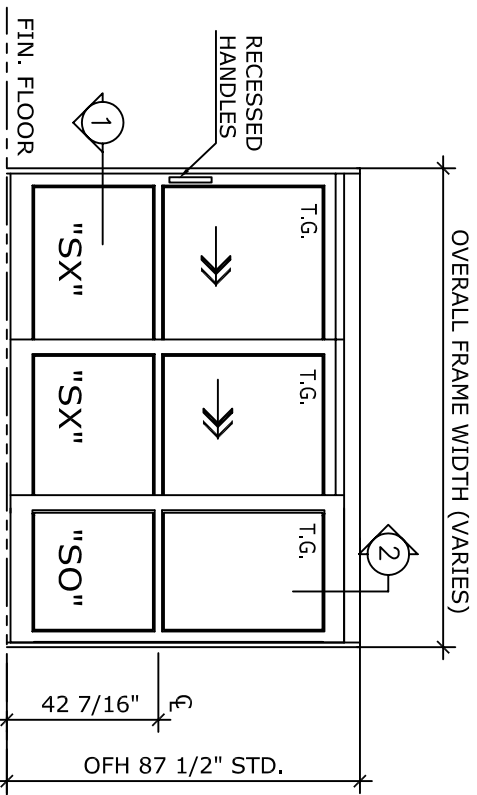
NOTE:
 MANUAL SLIDING DOOR SYSTEM SHALL BE HUNTER "IC-18" AS ENGINEERED, MANUFACTURED & ASSEMBLED BY HUNTER ACCESS TECHNOLOGIES INC.

STANDARD FINISH: ANODIZED, CLEAR; DARK BRONZE; SPECIAL FINISHES ARE AVAILABLE

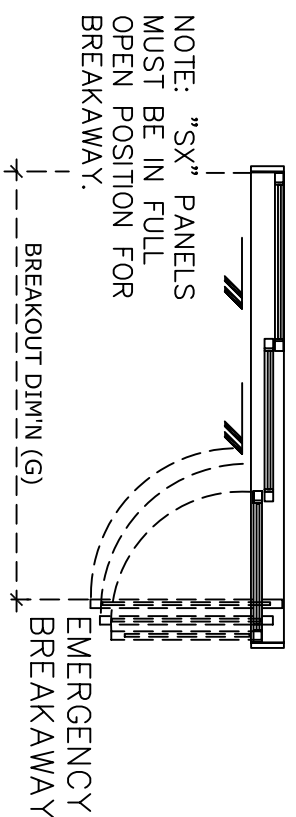
UNIT DESCRIPTION

HUNTER IC-18-3-TKTR

SX-SX-SO: TRACKLESS TELESCOPIC OVERHEAD CONCEALED R.H. SLIDE NARROW STILE F.B.O. MANUAL DOOR SYSTEM. STD. PACKAGE SHALL INCLUDE LOW PROFILE HEADER, FRAME AND DOORS WITH MUNTIN, 4" BOTTOM RAILS WITH CONCEALED SWEEP, BRUSH-PILE WEATHER STRIPPING, EMERGENCY BREAKAWAY, GLAZING STOPS FOR 1/4" T.G. AND RECESSED HANDLES. BOTTOM GUIDE SYSTEM SHALL BE TRACKLESS.

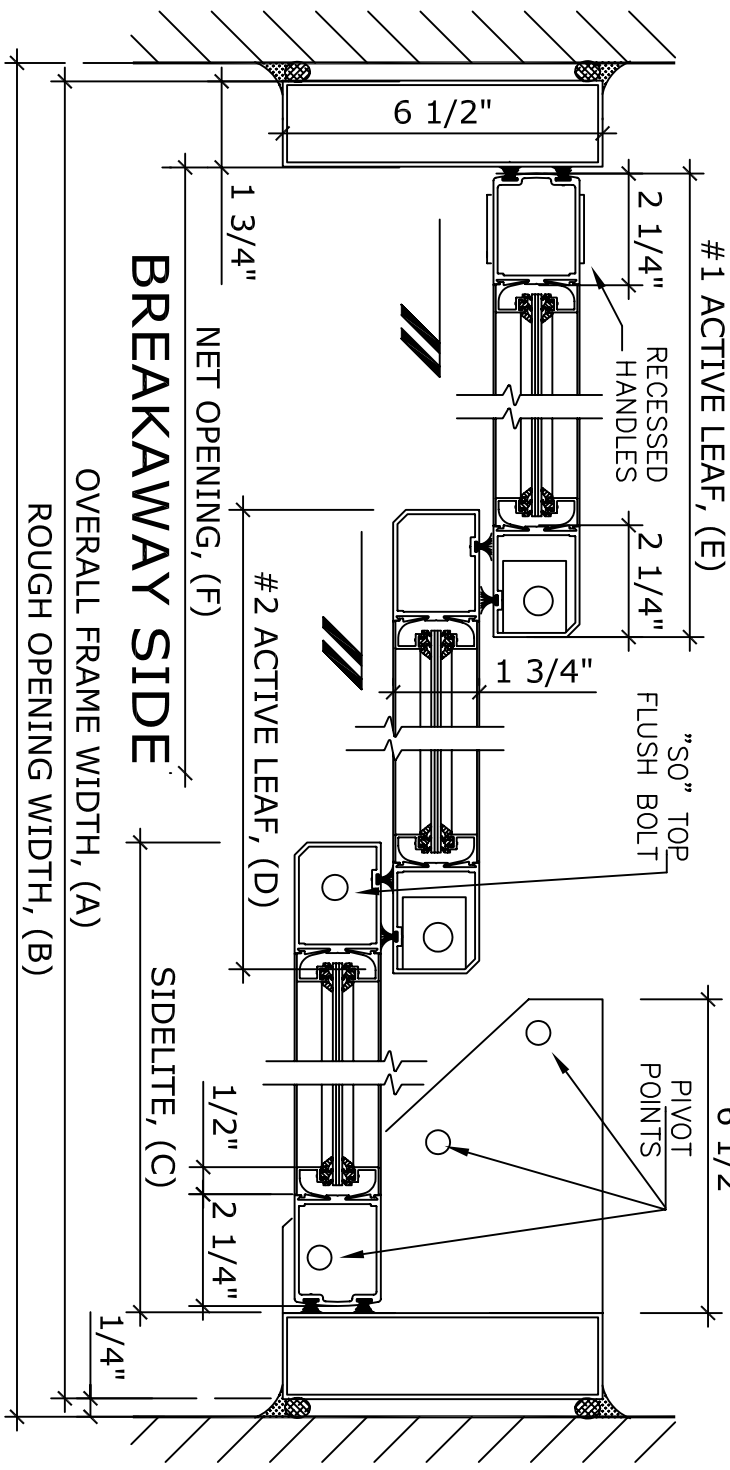


DOOR ELEVATION



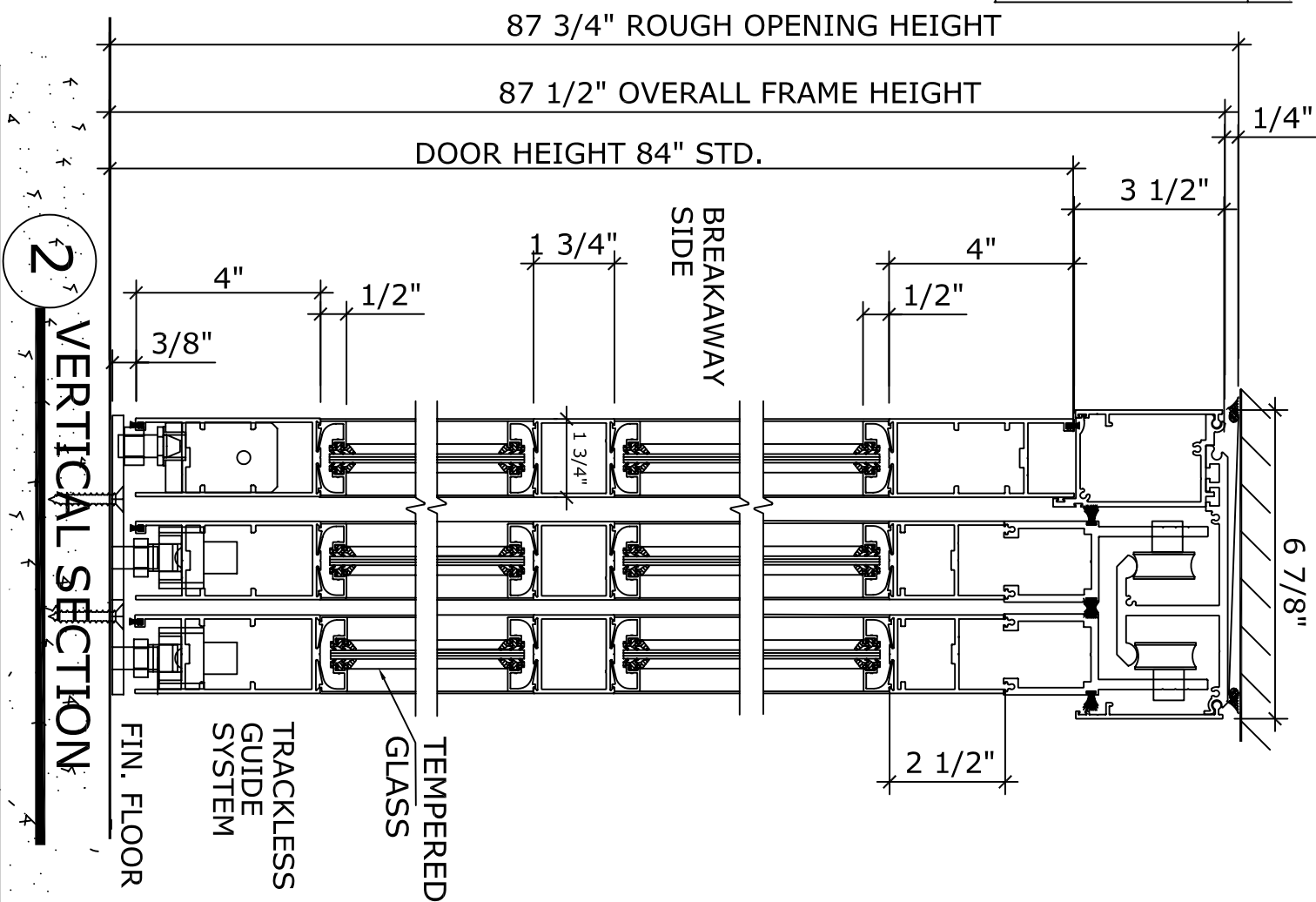
DOOR TYPE: IC18-3-TKTR-	OVERALL FRAME WIDTH	ROUGH OPENING WIDTH	SIDELITE PANEL WIDTH	#2 ACTIVE PANEL WIDTH	#1 ACTIVE PANEL WIDTH	NET DOOR OPENING	BREAK OUT DIM'N
	A	B	C	D	E	F	G
TKTR-7	84"	84 1/2"	22 11/16"	28 11/16"	34 11/16"	40 13/16"	73 1/2"
TKTR-8	96"	96 1/2"	26 11/16"	32 11/16"	38 11/16"	48 13/16"	85 1/2"
TKTR-9	108"	108-1/2"	30 11/16"	36 11/16"	42 11/16"	56 13/16"	97 1/2"
KEY (INCHES)	(B-1/2)	(A+1/2)	(A-16)/3	(C+6)	(D+6)	A-(E+8 1/2)	(A-10 1/2)

REFER TO RELEVANT (LOCAL, STATE, NATIONAL OR AHJ) BUILDING CODE FOR MIN DOOR HEIGHT & MIN/MAX WIDTH ALLOWABLE FOR EGRESS REQUIREMENT.
 6 1/2"



1 HORIZONTAL SECTION

APPLICATION:
 IC-18-3-TKTR. TRACKLESS TELESCOPIC RIGHT HAND, INTENSIVE CARE UNIT SLIDER SYSTEM.



2 VERTICAL SECTION

NOTE:
 HUNTER ACCESS TECHNOLOGIES INC. RESERVES THE RIGHT TO CHANGE & IMPROVE IT'S PRODUCTS & SPECIFICATIONS WITHOUT NOTICE.



125 KENYON DRIVE
 SUITE #3
 LAKEWOOD, NJ 08701
 TEL. 732-942-6099
 FAX. 732-942-6033
 www.hunteraccesstechnologies.com

SHEET TITLE:	ARCHITECT:	SHEET NO. 5
CONTRACTOR:	SECTION IC	
DETAIL SCALE	DRAWN BY	DATE