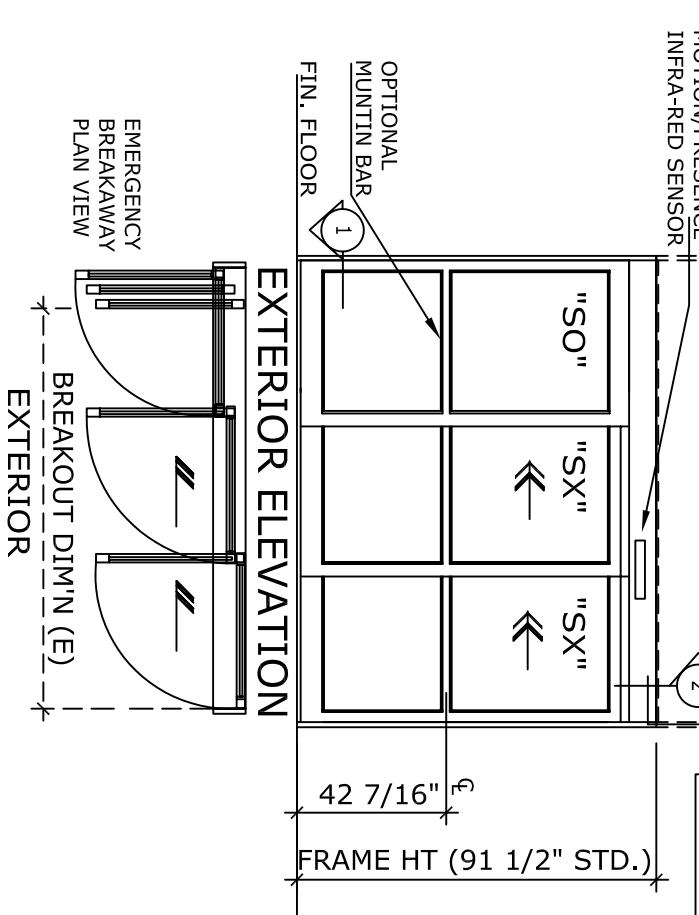


OVERALL FRAME WIDTH (VARIES),  
 ELECTRICAL SUPPLY  
 120 VAC, 60 HZ, 15A  
 BY ELECTRICAL  
 CONTRACTOR  
 TO JUNCTION BOX



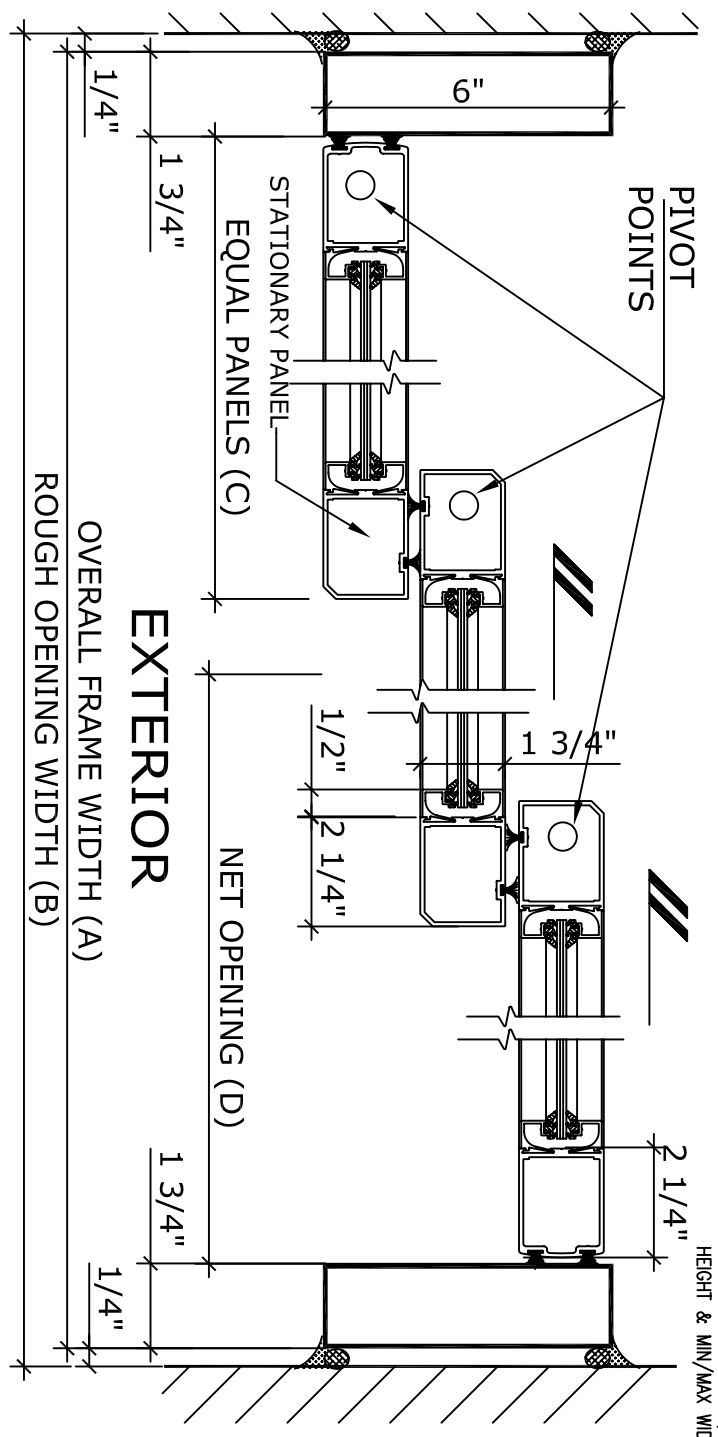
NOTE:  
 AUTOMATIC SLIDING DOOR OPERATOR SHALL BE "DS-18" CUL USA APPROVED, CONFORMING TO UL STD. 325 & ANSI-BHMA STD. A156.10 CERTIFIED TO CAN. CSA STD. C22.2#24-93 AS MANUFACTURED BY HUNTER ACCESS TECHNOLOGIES INC.

STANDARD FINISH: ANODIZED, CLEAR; DARK BRONZE;  
 SPECIAL FINISHES ARE AVAILABLE

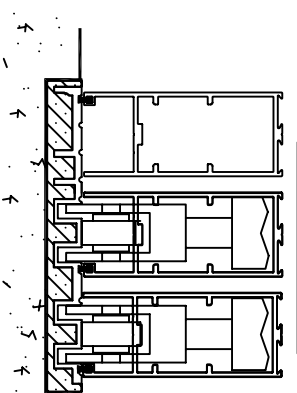
UNIT DESCRIPTION	
HUNTER DS-18-3-TFBL	
SO-SX-SX: OVERHEAD CONCEALED TELESCOPIC LEFT HAND FULL BREAKOUT SLIDE DOOR SYSTEM, NARROW STILE DOORS. STD. PACKAGE SHALL INCLUDE AUTOMATIC OPERATOR, FRAME AND DOORS WITH MUNTIN, 4" BOTTOM RAILS WITH CONCEALED SWEEP, BRUSH-PILE WEATHER STRIPPING, EMERGENCY BREAKAWAY, MS LOCK, GLAZING STOPS FOR 1/4" TEMPERED GLASS, BOTTOM GUIDE SYSTEM SHALL BE PART OF FULL WIDTH THRESHOLD, DUAL DOORWAY SAFETY BEAMS, 3-POSITION SWITCH & MOTION/PRESENCE SENSORS.	

DOOR TYPE:	OVERALL FRAME A WIDTH	ROUGH OPENING B WIDTH	EQUAL PANELS C WIDTH	NET DOOR D OPENING	BREAK OUT E DIM'N
DS18-3-TFBL-	72"	72 1/2"	24 11/16"	36 1/4"	59"
TFBL-6	84"	84 1/2"	28 11/16"	44 1/4"	71"
TFBL-7	96"	96 1/2"	32 11/16"	52 1/4"	83"
TFBL-8	108"	108-1/2"	36 11/16"	60 1/4"	95"
TFBL-9	(B-1/2)	(A+1/2)	(A/3+11/16)	2(A/3-5 7/8)	(A-13)

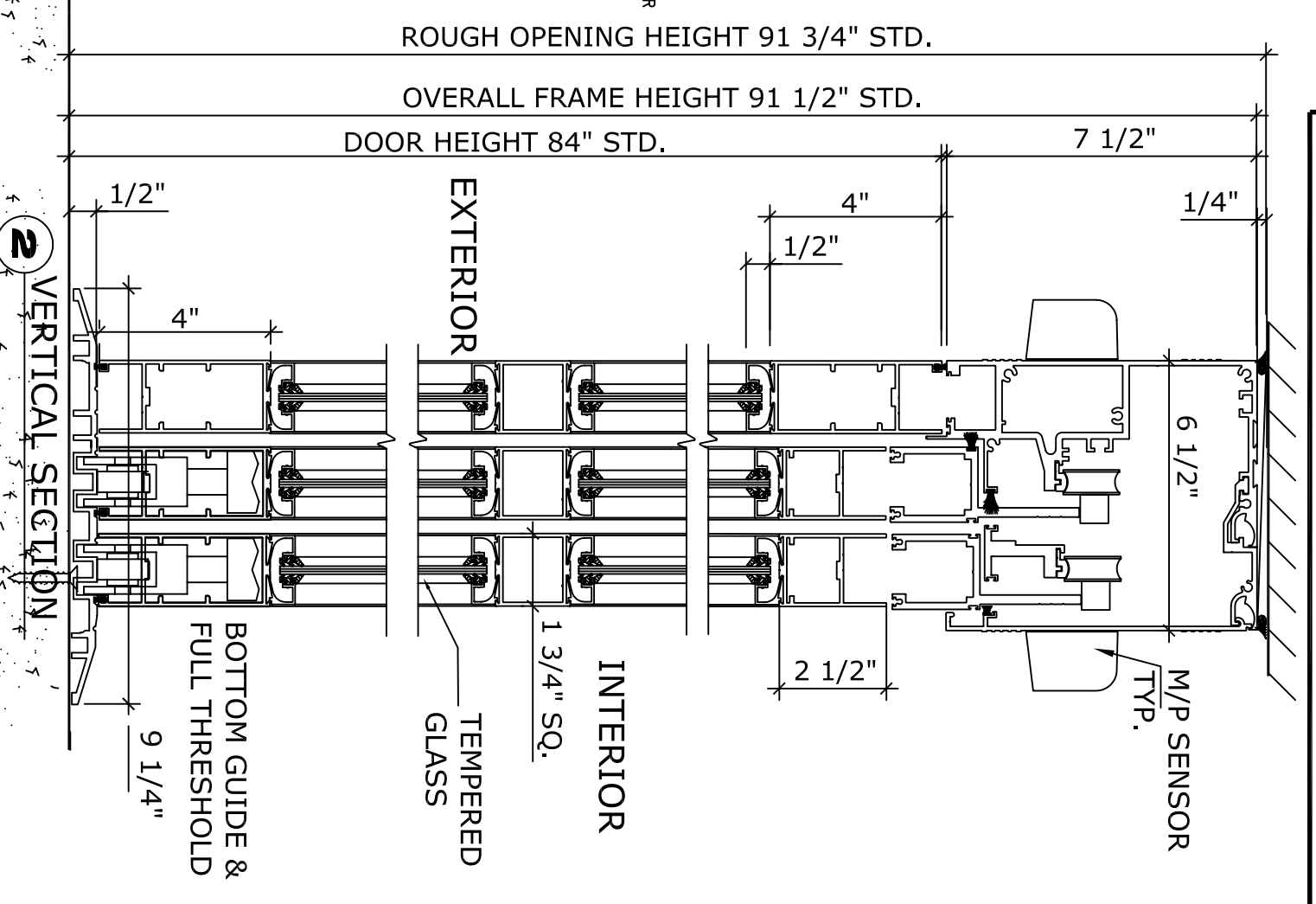
REFER TO RELEVANT (LOCAL, STATE, NATIONAL OR AHJ) BUILDING CODE FOR MIN DOOR HEIGHT & MIN/MAX WIDTH ALLOWABLE FOR EGRESS REQUIREMENT.



1 HORIZONTAL SECTION



RECESSED TRACK  
 OPTIONAL



2 VERTICAL SECTION

APPLICATION:  
 DS-18-3-TFBL. TELESCOPIC FULL BREAKOUT LEFT HAND, AUTOMATIC SLIDING DOOR SYSTEM.

NOTE:  
 HUNTER ACCESS TECHNOLOGIES INC. RESERVES THE RIGHT TO CHANGE & IMPROVE ITS PRODUCTS & SPECIFICATIONS WITHOUT NOTICE.

**Hunter**  
 ACCESS TECHNOLOGIES INC.

125 KENYON DRIVE  
 SUITE #3  
 LAKEWOOD, NJ 08701  
 TEL. 732-942-6099  
 FAX. 732-942-6033  
 www.hunteraccesstechnologies.com

SHEET TITLE:	SHEET NO.
ARCHITECT:	16
CONTRACTOR:	SECTION
DETAIL SCALE	DS
DRAWN BY	
DATE	