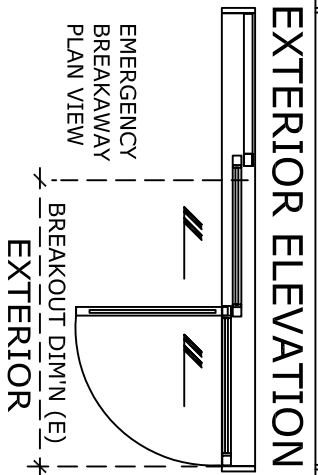
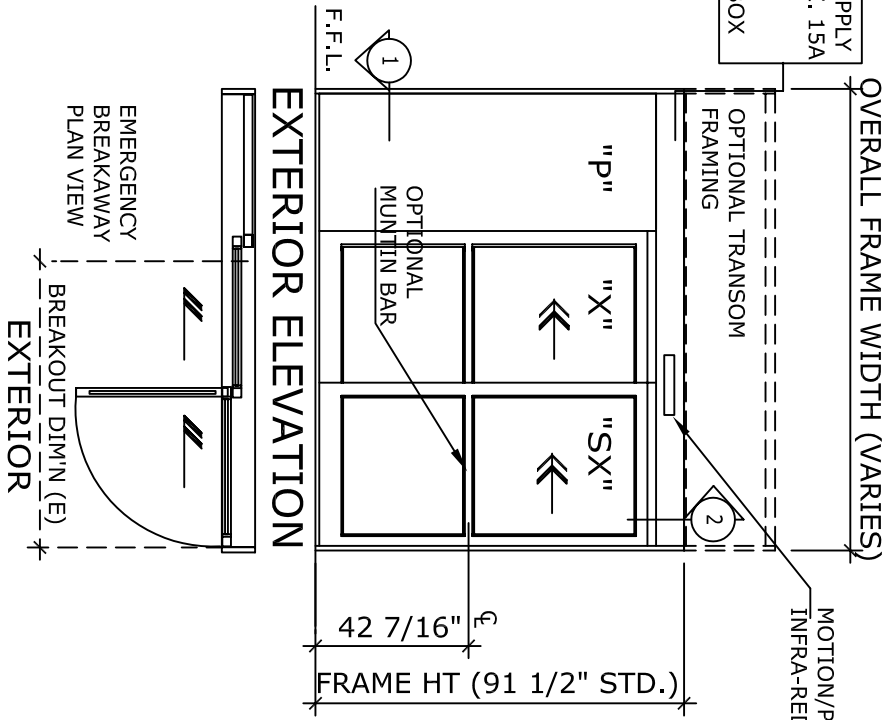


ELECTRICAL SUPPLY
120 VAC, 60 HZ, 15A
BY ELECTRICAL
CONTRACTOR
TO JUNCTION BOX



NOTE:
AUTOMATIC SLIDING DOOR OPERATOR SHALL BE "DS-18"
CUL USA APPROVED, CONFORMING TO UL STD. 325 &
ANSI-BHMA STD. A156.10 CERTIFIED TO CAN. CSA STD.
C22.2#24-93 AS MANUFACTURED BY HUNTERACCESS
TECHNOLOGIES INC.

STANDARD FINISH: ANODIZED, CLEAR; DARK BRONZE;
SPECIAL FINISHES ARE AVAILABLE

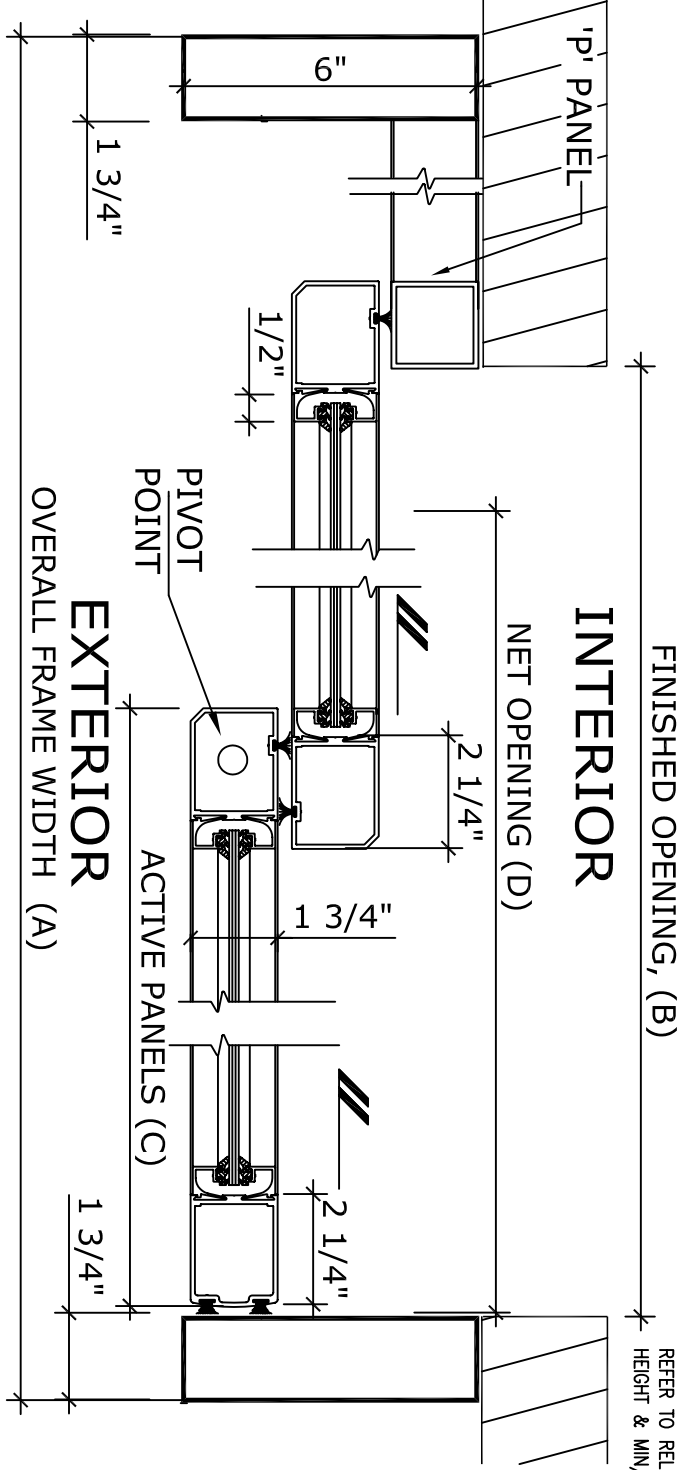
UNIT DESCRIPTION

HUNTER_DS-18-3-TSFL
P-X-SX: SURFACE MOUNTED TELESCOPIC LEFT HAND SLIDE
SYSTEM WITH "P" PANEL, NARROW STILE DOORS.

STD. PACKAGE SHALL INCLUDE AUTOMATIC OPERATOR, FRAME AND
DOORS WITH MUNTIN, 4" BOTTOM RAILS WITH CONCEALED SWEEP,
BRUSH PILE WEATHER STRIPPING, EMERGENCY BREAKAWAY, MS LOCK,
GLAZING STOPS FOR 1/4" TEMPERED GLASS, DOOR GUIDE SYSTEM,
SHALL BE CONCEALED IN BOTTOM HORIZONTAL RAILS. DUAL DOORWAY
SAFETY BEAMS, 3-POSITION SWITCH & MOTION/PRESENCE SENSORS.

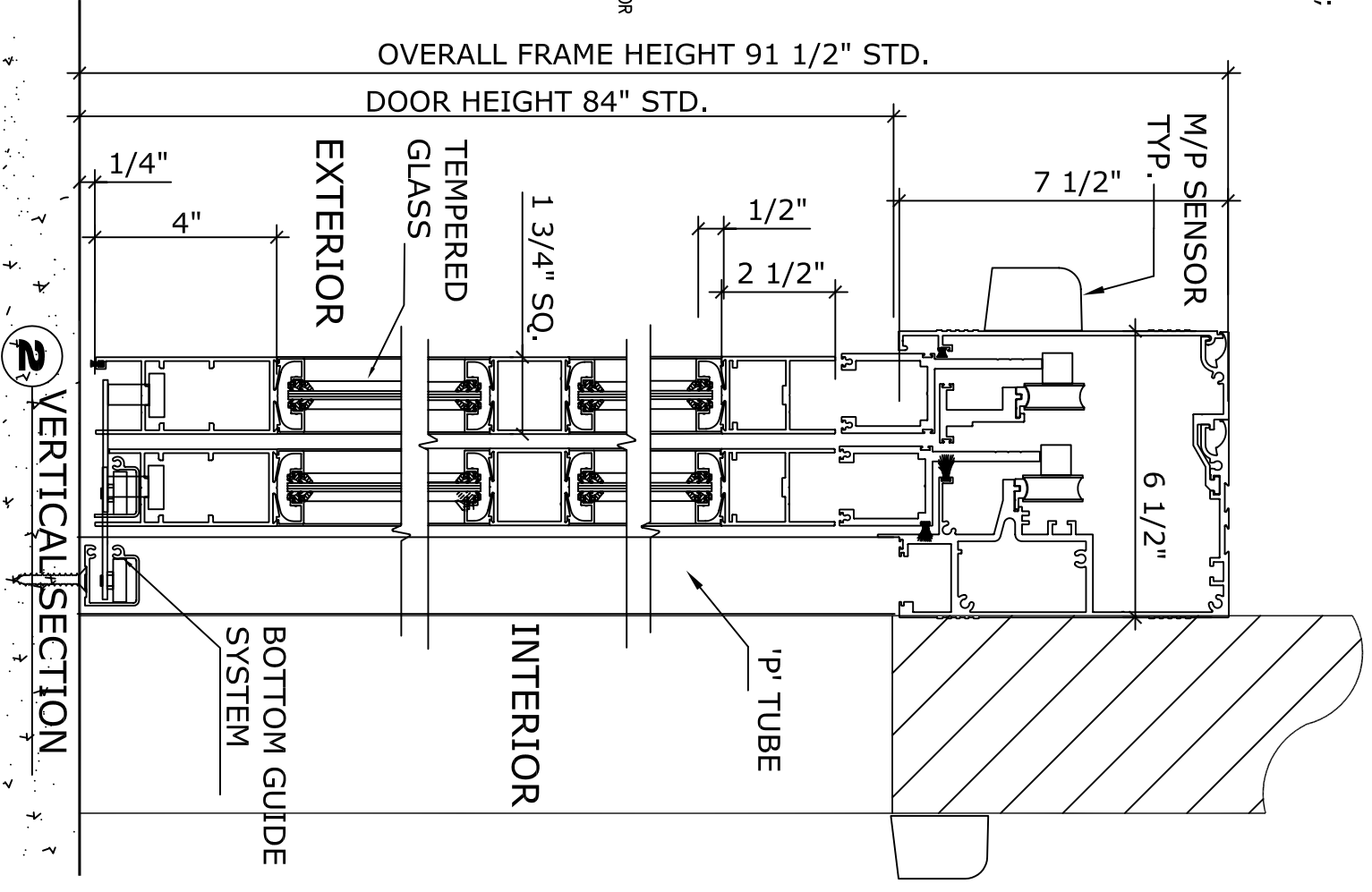
DOOR TYPE:	OVERALL FRAME A WIDTH	FINISHED OPENING B WIDTH	ACTIVE PANELS C WIDTH	NET DOOR D OPENING	MAX B/OUT E DIMIN
DS18-3-TSFL	77 3/4"	48"	26 1/4"	42 1/4"	46"
TSFL-4	95 3/4"	60"	32 1/4"	54 1/4"	58"
TSFL-5	113 3/4"	72"	38 1/4"	66 1/4"	70"
TSFL-6	131 3/4"	84"	44 1/4"	78 1/4"	82"
KEY (INCHES)	(3B/2+5 3/4)	(A-5 3/4)2/3	(B/2+2 1/4)	(B-5 3/4)	(B-2)

REFER TO RELEVANT (LOCAL, STATE, NATIONAL OR AHJ) BUILDING CODE FOR MIN DOOR
HEIGHT & MIN/MAX WIDTH ALLOWABLE FOR EGRESS REQUIREMENT.



1 HORIZONTAL SECTION

APPLICATION:
DS-18-3-TSFL. TELESCOPIC SURFACE MOUNT
LEFT HAND, AUTOMATIC SLIDING DOOR SYSTEM.



2 VERTICAL SECTION

NOTE:
HUNTER ACCESS TECHNOLOGIES INC. RESERVES
THE RIGHT TO CHANGE & IMPROVE IT'S
PRODUCTS & SPECIFICATIONS WITHOUT NOTICE.

Hunter
ACCESS TECHNOLOGIES INC.

125 KENYON DRIVE
SUITE #3
LAKEWOOD, NJ 08701
TEL: 732-942-6099
FAX: 732-942-6033
www.hunteraccess technologies.com

SHEET TITLE:		SHEET NO. 22	
ARCHITECT:		SECTION	
CONTRACTOR:		DS	
DETAIL SCALE	DRAWN BY	DATE	