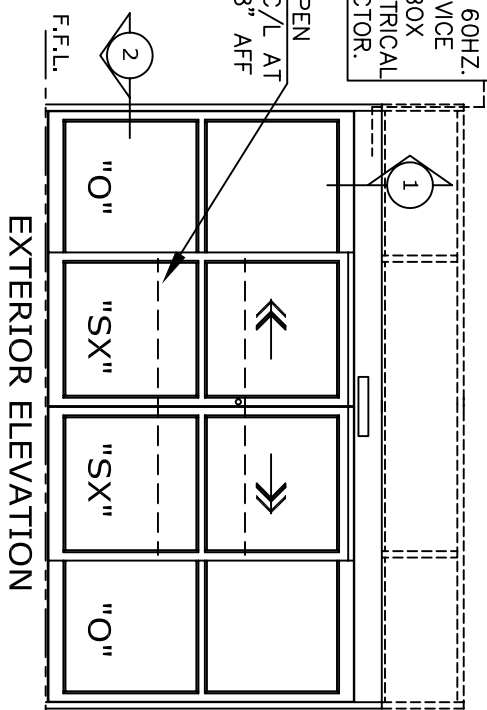
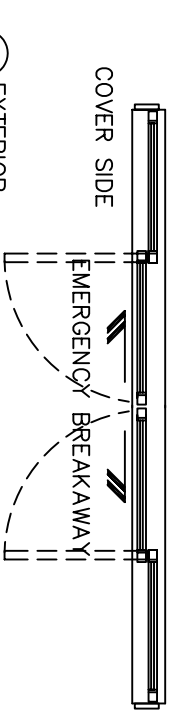


120VAC, 60HZ,
15A SERVICE
TO "J" BOX
BY ELECTRICAL
CONTRACTOR.

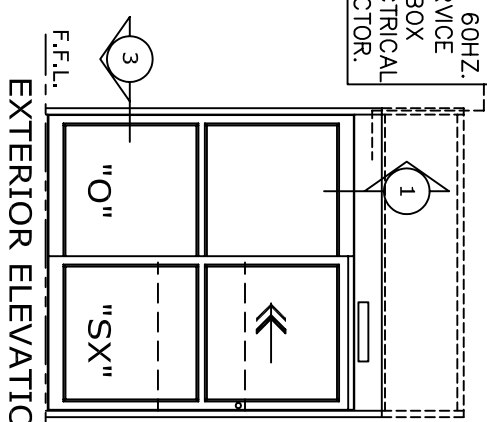
HOLD-OPEN
BEAMS C/L AT
24 & 48" AFF



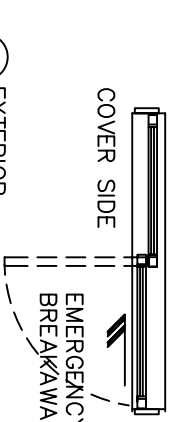
2 EXTERIOR
PLAN VIEW



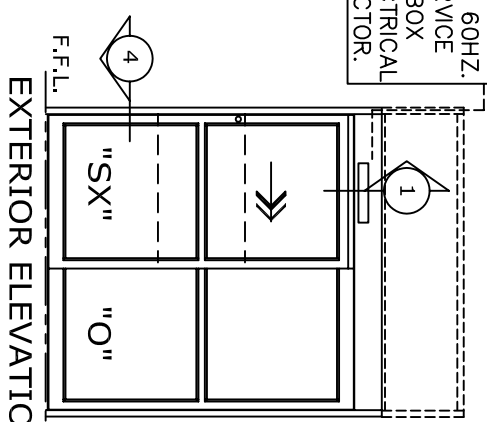
120VAC, 60HZ,
15A SERVICE
TO "J" BOX
BY ELECTRICAL
CONTRACTOR.



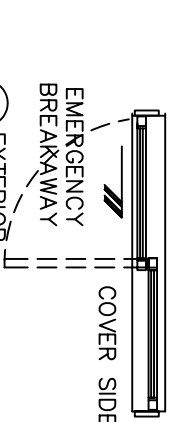
3 EXTERIOR
PLAN VIEW



120VAC, 60HZ,
15A SERVICE
TO "J" BOX
BY ELECTRICAL
CONTRACTOR.

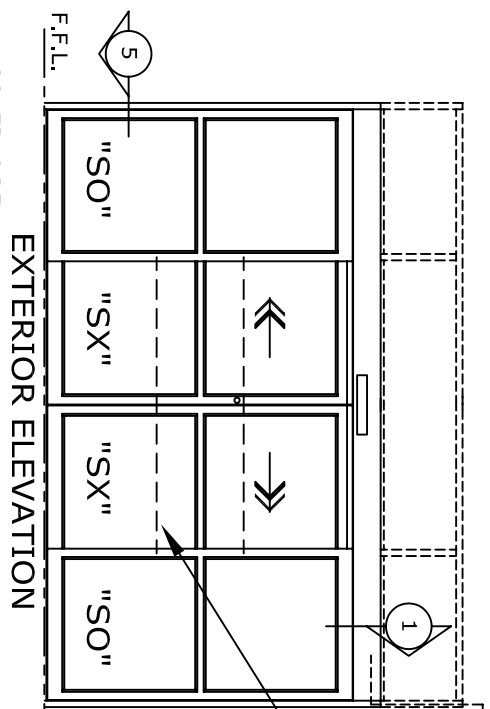


4 EXTERIOR
PLAN VIEW

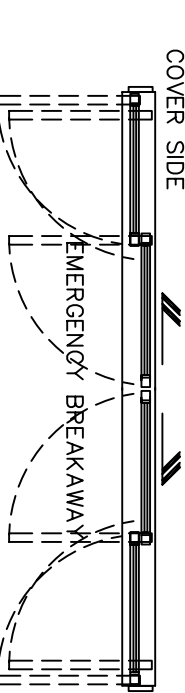


120VAC, 60HZ,
15A SERVICE
TO "J" BOX
BY ELECTRICAL
CONTRACTOR.

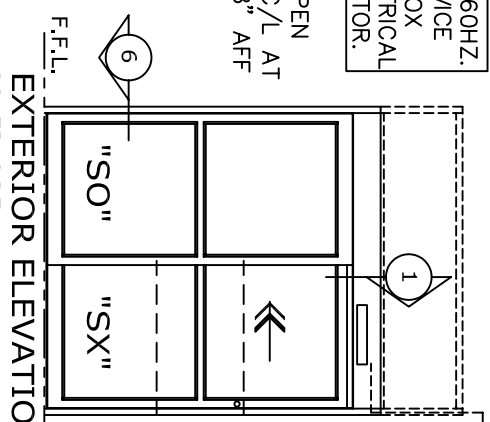
HOLD-OPEN
BEAMS C/L AT
24 & 48" AFF



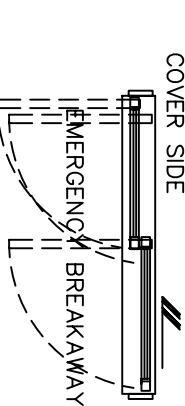
5 EXTERIOR
PLAN VIEW



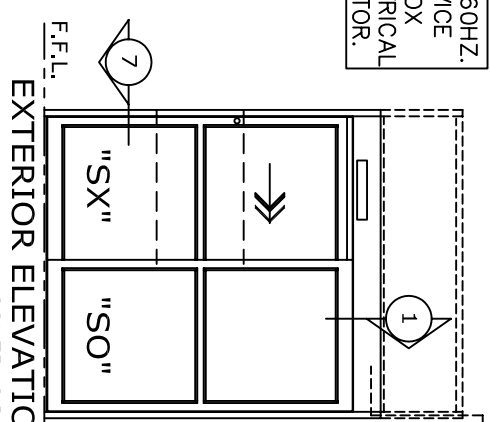
120VAC, 60HZ,
15A SERVICE
TO "J" BOX
BY ELECTRICAL
CONTRACTOR.



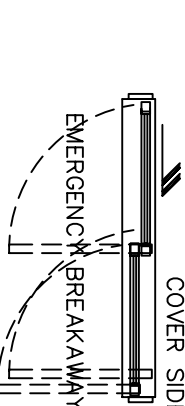
6 EXTERIOR
PLAN VIEW



120VAC, 60HZ,
15A SERVICE
TO "J" BOX
BY ELECTRICAL
CONTRACTOR.

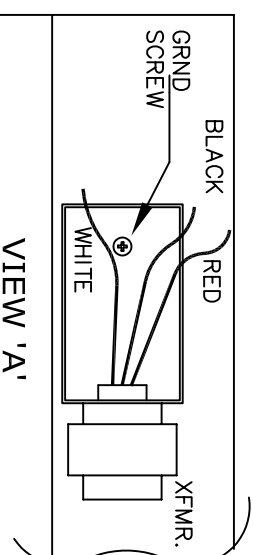


7 EXTERIOR
PLAN VIEW



DS-18 ELECTRICAL SUPPLY CONNECTION

BLACK = FEED OF SWITCH
WHITE = TO WHITE OF TRANSFORMER
GROUND = TO GROUND SCREW IN SWITCH BOX
RED WIRE IS 100V FEED TO CONTROL BOX
IDO NOT CONNECT SUPPLY VOLTAGE TO RED WIRE!
SUPPLY VOLTAGE = 120VAC.



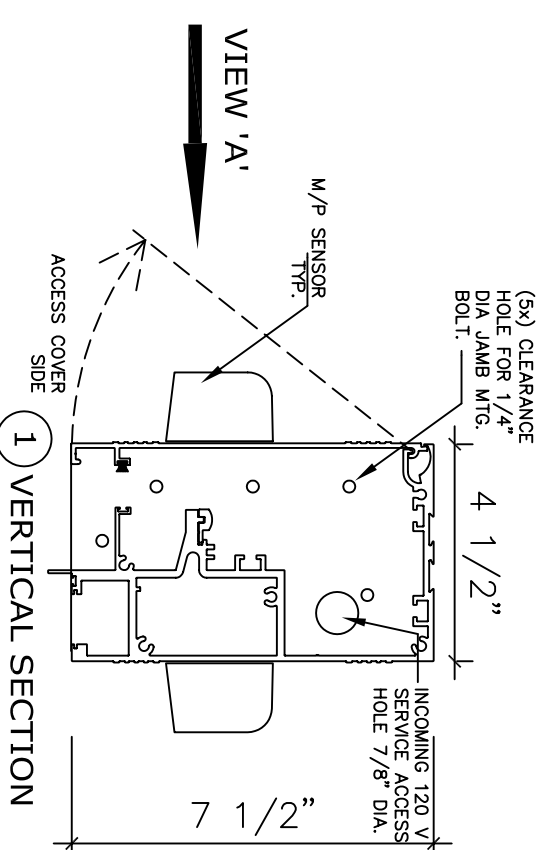
APPLICATION:
DS-18-EL. WIRING REQUIREMENTS
AUTOMATIC SLIDING DOOR SYSTEM.

NOTE:
AUTOMATIC SLIDING DOOR OPERATOR SHALL BE "DS-18" CUL USA APPROVED, CONFORMING TO UL STD. 325 & ANSI-BHMA STD. A156.10 CERTIFIED TO CAN. CSA STD. C22.2#24-93 AS MANUFACTURED BY HUNTER ACCESS TECHNOLOGIES INC.

STANDARD FINISH: ANODIZED, CLEAR; DARK BRONZE;
SPECIAL FINISHES ARE AVAILABLE

IMPORTANT NOTES

- A. SLIDER HEADER IS FACTORY PREPPED FOR MOUNTING TO JAMTBUES. FASTENING HARDWARE DEPENDANT UPON MOUNTING SURFACES OR WALL STRUCTURE OF INSTALLATION AREA IS NOT SUPPLIED.
- B. ACCESS HOLES ARE LOCATED THROUGH THE END PLATES OF THE HEADER FOR CLEAN CONCEALED LOOK; ALTERNATIVELY THEY CAN BE THROUGH THE TOP OF THE HEADER WITH WIRING RUN THROUGH CODE APPROVED SURFACE CONDUIT.
1. ELECTRICAL SERVICE AND ALL HARD WIRING TO BE SUPPLIED BY QUALIFIED PROFESSIONAL CONTRACTOR WITHIN THE GUIDELINES OF THE ENFORCED LOCAL ELECTRICAL CODES.
2. ACCESS HOLES ARE ALWAYS AWAY FROM COVER SIDE OF HEADER TO ENSURE CABLES & WIRING RUNS DO NOT INTERFERE WITH & GET CHAFED BY THE MECHANICS OF THE OPERATOR WITHIN THE HEADER.
3. HIGH VOLTAGE INCOMING POWER & LOW VOLTAGE WIRES CANNOT SHARE THE SAME ACCESS HOLE. HIGH VOLTAGE WIRES MUST BE ROUTED IN CONDUIT & SECURED AWAY FROM ALL LOW VOLTAGE WIRES.
4. IF HEADER IS MOUNTED ON ALUMINUM FRAMING, HIGH & LOW VOLTAGE WIRING CAN BE ROUTED THROUGH VERTICAL & HORIZONTAL TUBES.
5. INCOMING (MAIN) POWER GROUND WIRE CANNOT SHARE THE SAME GROUNDING STUD AS SYSTEM GROUND WIRE. GROUND INCOMING (MAIN) POWER ACCORDINGLY.



NOTE:
HUNTER ACCESS TECHNOLOGIES INC. RESERVES
THE RIGHT TO CHANGE & IMPROVE IT'S
PRODUCTS & SPECIFICATIONS WITHOUT NOTICE.



125 KENYON DRIVE
SUITE #3
LAKEWOOD, NJ 08701
TEL: 732-942-6099
FAX: 732-942-6033
www.hunteraccesstechnologies.com

JOB NAME:

LOCATION:

DOOR NUMBER:

SHEET NO.

25

SECTION

DS