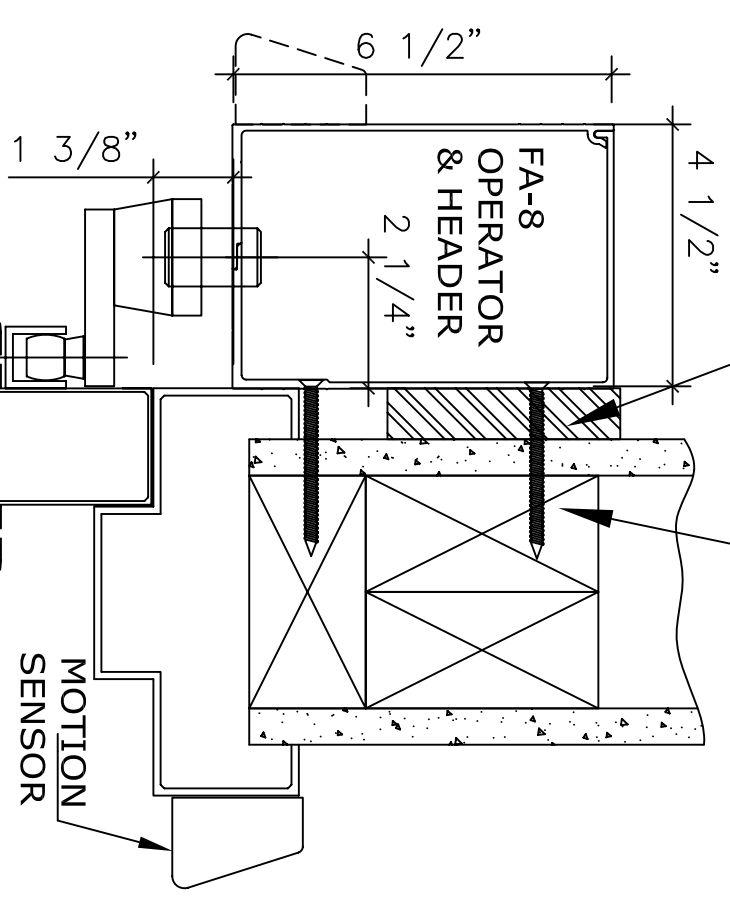


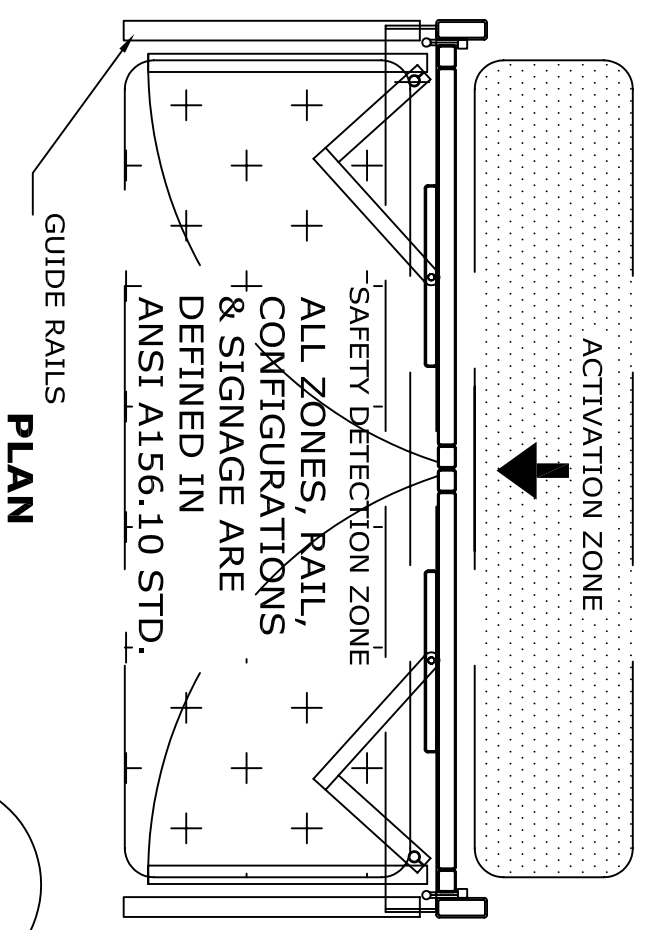
FILLER PLATE
AS REQUIRED.
BY OTHERS

REINFORCEMENT
BY OTHERS



OVERHEAD AND/OR
DOOR MOUNTED
SAFETY SENSORS AS
PER SPECIFICATION.

**VERTICAL
SECTION**



PLAN

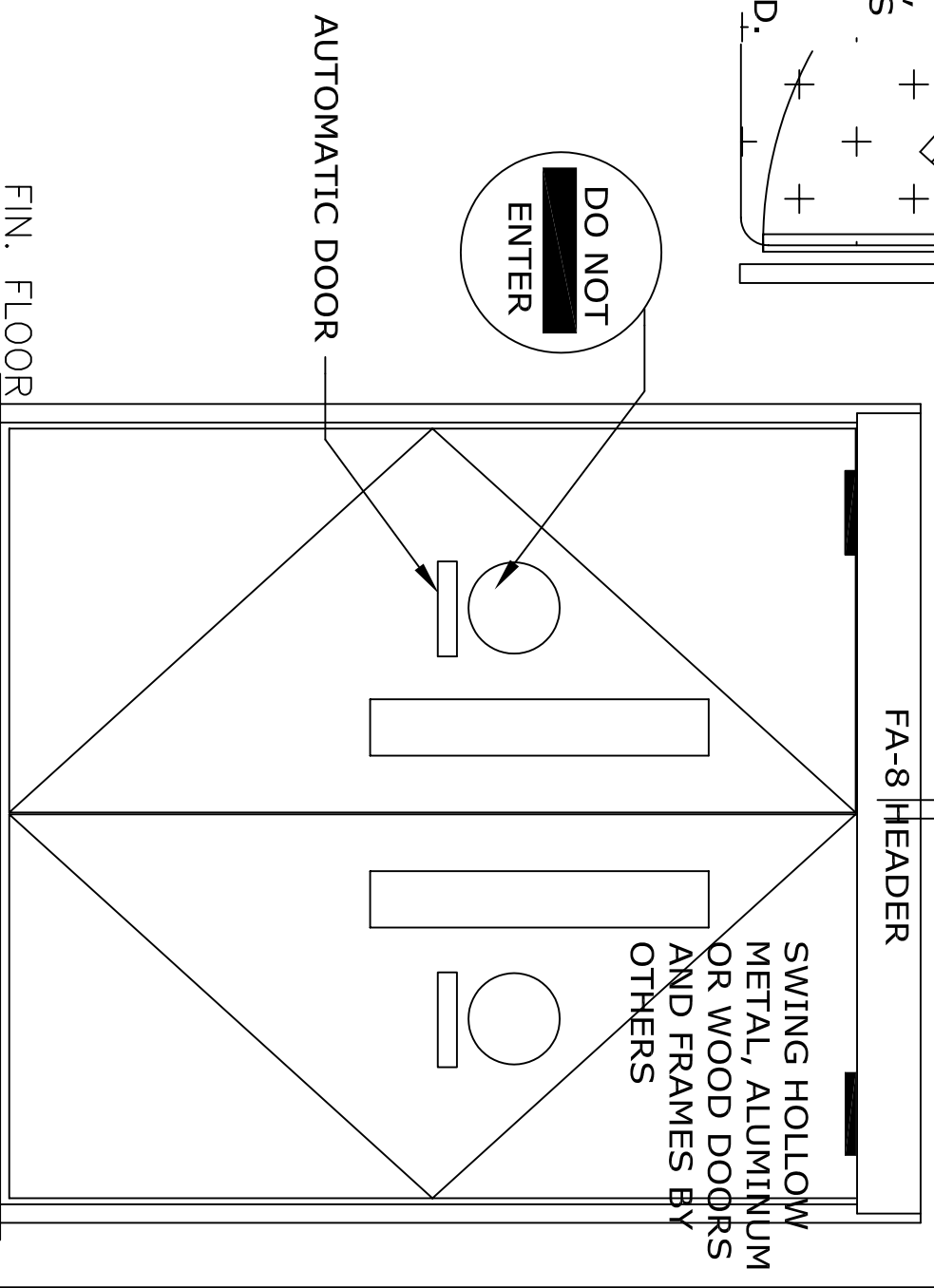
APPLICATION:
FA-8-2-5 FULLY AUTOMATIC
PAIR DOORS PULL

NOTE:
AUTOMATIC SWING DOOR OPERATOR SHALL BE "FA-8" CETL USA APPROVED, CONFORMING TO UL STD. 325 & ANSI-BHMA STD. A156.10 CERTIFIED TO CAN. CSA STD. C22.2#247 AS MANUFACTURED BY HUNTER ACCESS TECHNOLOGIES INC. COMPLETE DOOR SYSTEM MUST MEET ANSI A156.10 STANDARDS

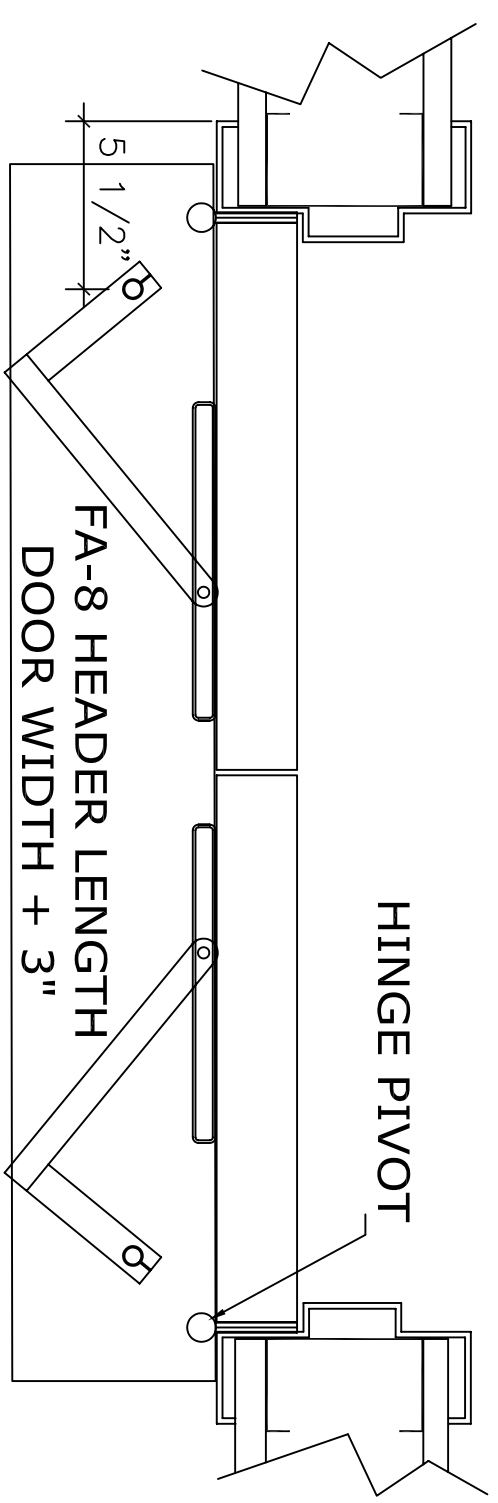
STANDARD FINISH: CLEAR ANODIZE, DARK BRONZE,
SPECIAL FINISHES ARE AVAILABLE

120V AC. 60HZ. 15A.
BY ELEC. CONTRACTOR.

**DO NOT
ENTER**



ELEVATION



HORIZONTAL SECTION

NOTE:
HUNTER ACCESS TECHNOLOGIES INC. RESERVES
THE RIGHT TO CHANGE & IMPROVE ITS
PRODUCTS & SPECIFICATIONS WITHOUT NOTICE.

Hunter
ACCESS TECHNOLOGIES INC.

125 KENYON DRIVE
SUITE #3
LAKEWOOD, NJ 08701
TEL: 732-942-6099
FAX: 732-942-6033
www.hunteraccess technologies.com

SHEET TITLE:		SHEET NO.	
ARCHITECT:		6	
CONTRACTOR:		SECTION	
SCALE:	DRAWN BY:	DATE:	FA