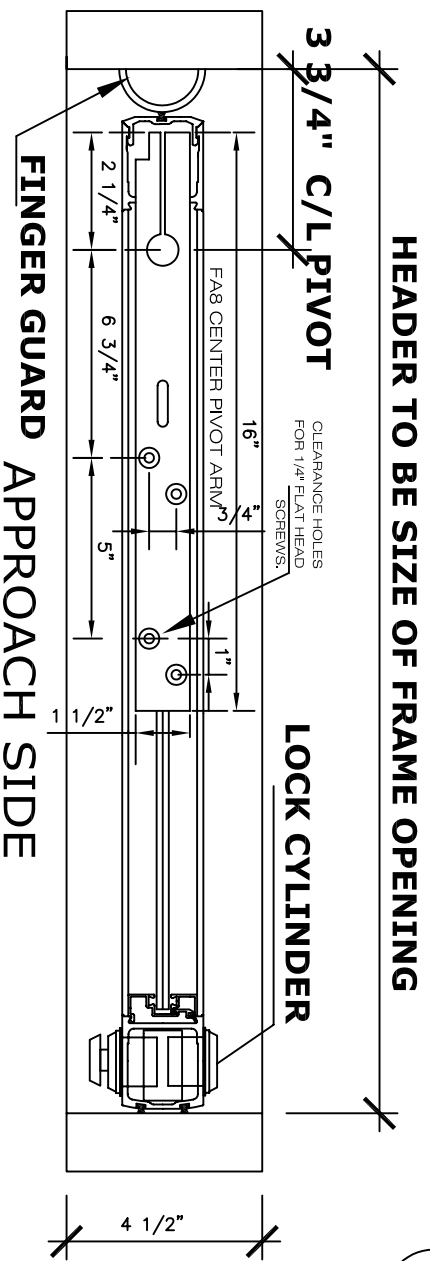
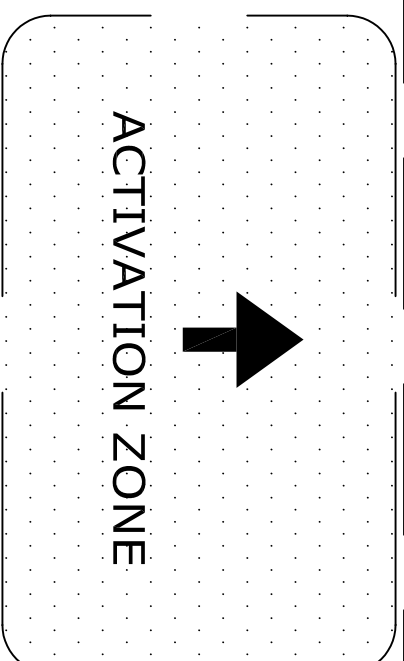
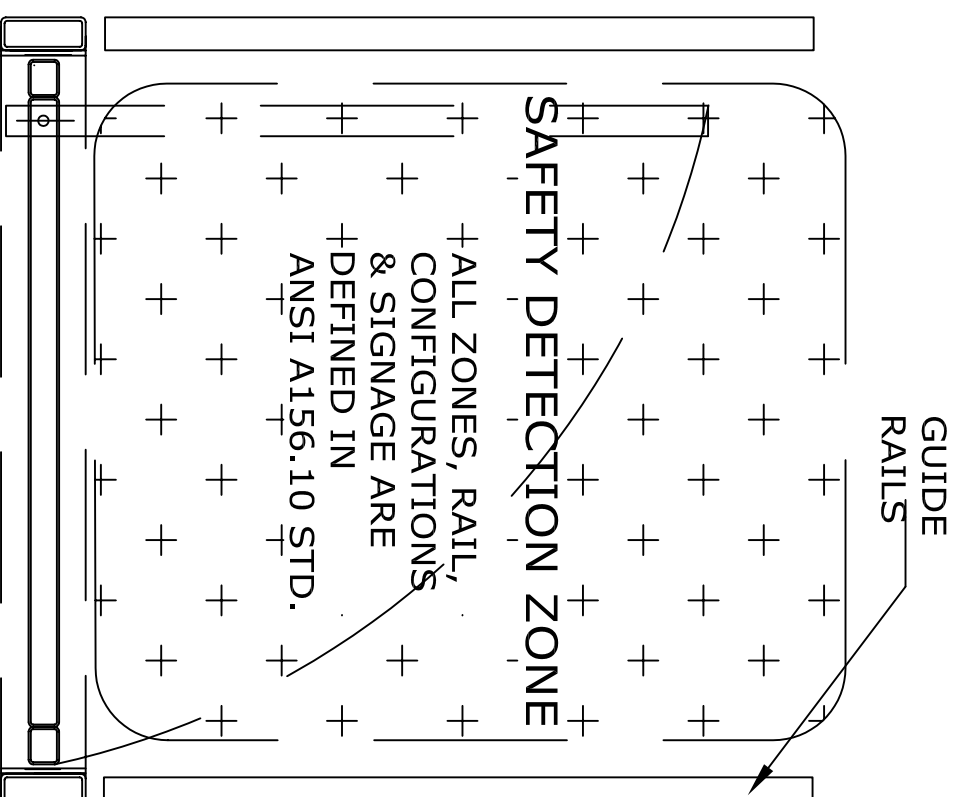


NOTE:  
HINGE SIDE  
TOP RAIL  
NEEDS CUT  
OUT ON BACK  
OF DOOR FOR  
OPERATOR ARM  
(MIN 1 5/8" X  
DEPTH OF WEB)

## VERTICAL SECTION



## HORIZONTAL SECTION



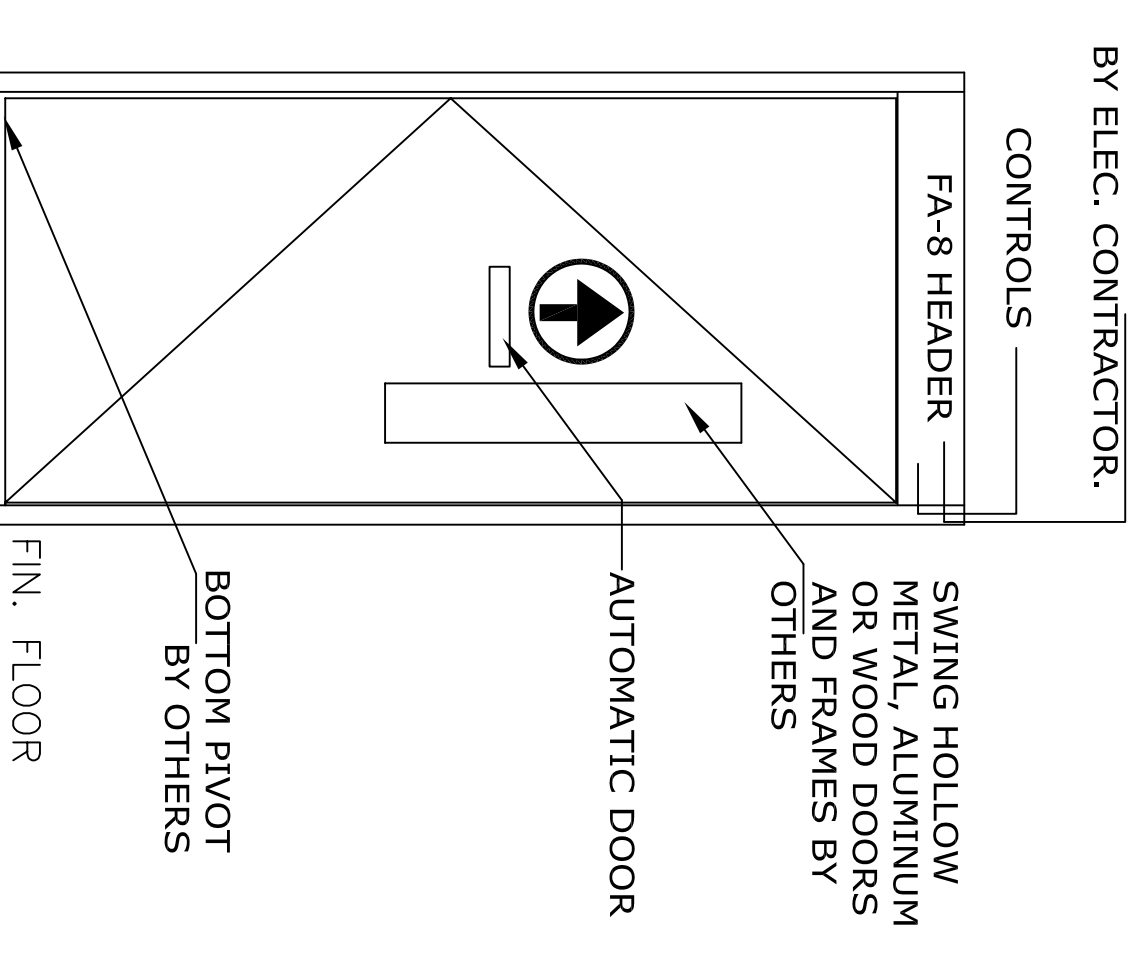
## PLAN

APPLICATION:  
FA-8-CH-4 FULLY AUTOMATIC  
LEFT HAND CENTER PIVOT.

NOTE:  
AUTOMATIC SWING DOOR OPERATOR SHALL BE "FA-8" CETL USA APPROVED, CONFORMING TO UL STD. 325 & ANSI-BHMA STD. A156.10 CERTIFIED TO CAN. CSA STD. C22.2#247 AS MANUFACTURED BY HUNTER ACCESS TECHNOLOGIES INC.  
COMPLETE DOOR SYSTEM MUST MEET ANSI A156.10 STANDARDS

STANDARD FINISH: CLEAR ANODIZE, DARK BRONZE,  
SPECIAL FINISHES ARE AVAILABLE

120V AC. 60HZ. 15A.  
BY ELEC. CONTRACTOR.



## ELEVATION

NOTE:  
HUNTER ACCESS TECHNOLOGIES INC. RESERVES  
THE RIGHT TO CHANGE & IMPROVE ITS  
PRODUCTS & SPECIFICATIONS WITHOUT NOTICE.

**Hunter**  
ACCESS TECHNOLOGIES INC.

125 KENYON DRIVE  
SUITE #3  
LAKEWOOD, NJ 08701  
TEL: 732-942-6099  
FAX: 732-942-6033  
www.hunteraccess technologies.com

SHEET TITLE:		SHEET NO.	
ARCHITECT:		SECTION	<b>8</b>
CONTRACTOR:			
SCALE:	DRAWN BY:	DATE:	