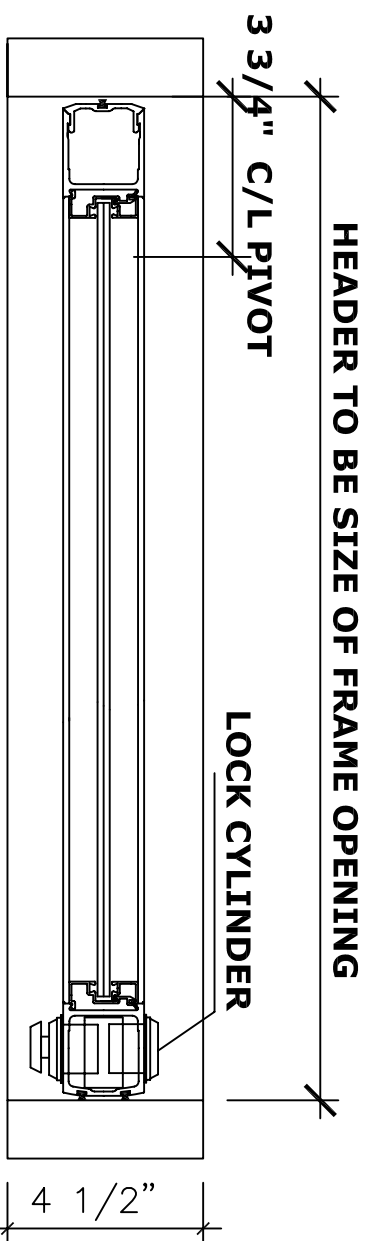
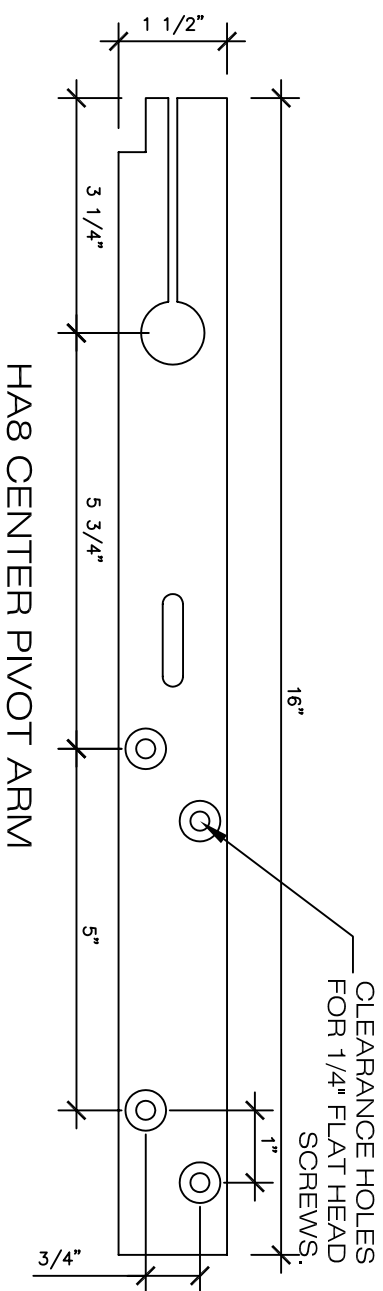


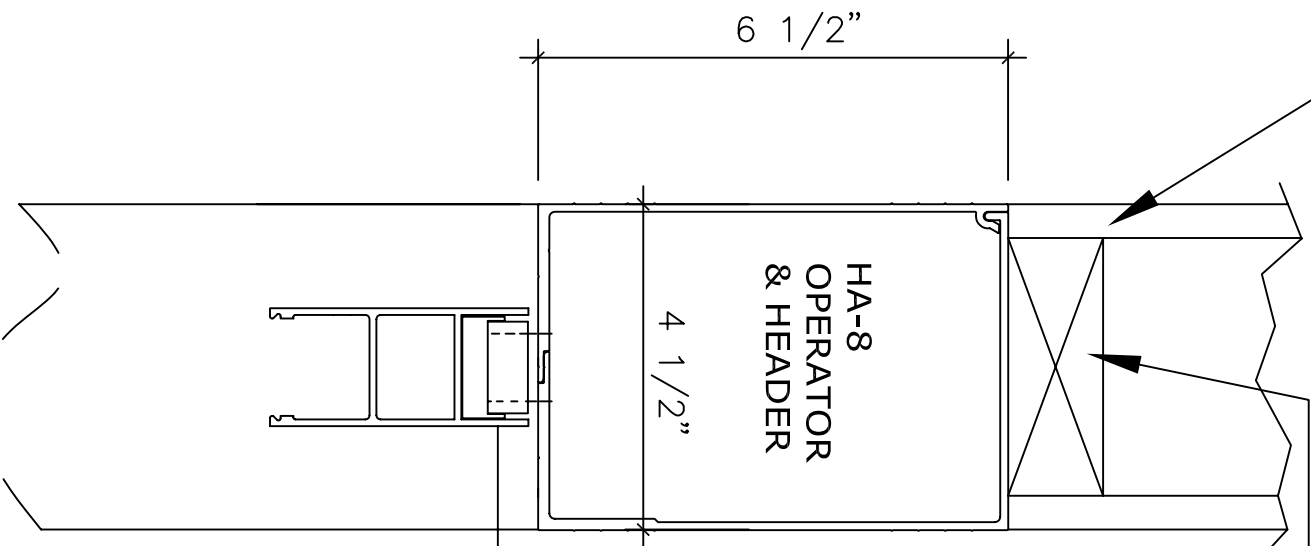
DRYWALL BY OTHERS

REINFORCEMENT BY OTHERS

INTERIOR  
**PLAN**



**HORIZONTAL SECTION**



**VERTICAL SECTION**

NOTE:  
HINGE SIDE TOP RAIL NEEDS CUT OUT ON BACK OF DOOR

BOTTOM PIVOT BY OTHERS

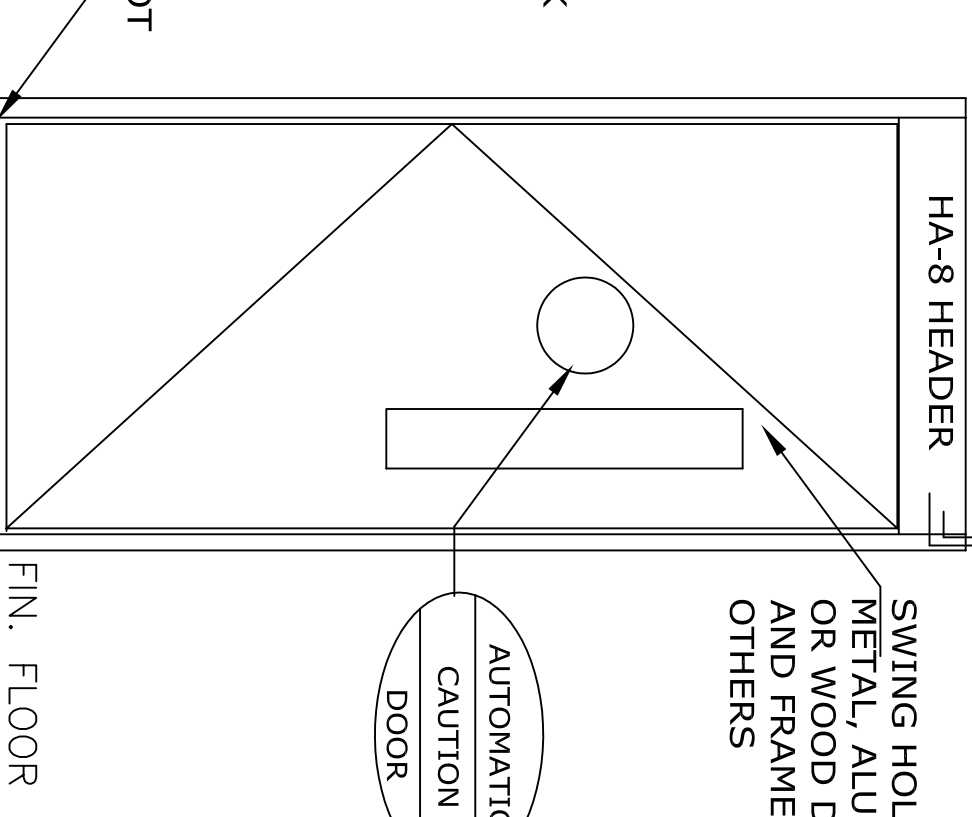
120V AC, 60HZ, 15A.  
BY ELEC. CONTRACTOR.

CONTROLS

HA-8 HEADER

SWING HOLLOW METAL, ALUMINUM OR WOOD DOORS AND FRAMES BY OTHERS

AUTOMATIC CAUTION DOOR



**APPLICATION:**  
HA-8-CH-4 LOW ENERGY OPERATOR LEFT HAND CENTER PIVOT.

NOTE:  
AUTOMATIC SWING DOOR OPERATOR SHALL BE "HA-8" CETL USA APPROVED, CONFORMING TO UL STD. 325 & ANSI-BHMA STD. A156.19 CERTIFIED TO CAN. CSA STD. C22.2#247 AS MANUFACTURED BY HUNTER ACCESS TECHNOLOGIES INC.  
32" CLEAR OPENING REQUIRED TO MEET ADA REQUIREMENT.

STANDARD FINISH: CLEAR ANODIZE, DARK BRONZE,  
SPECIAL FINISHES ARE AVAILABLE

NOTE:  
HUNTER ACCESS TECHNOLOGIES INC. RESERVES THE RIGHT TO CHANGE & IMPROVE ITS PRODUCTS & SPECIFICATIONS WITHOUT NOTICE.



125 KENYON DRIVE  
SUITE #3  
LAKEWOOD, NJ 08701  
TEL: 732-942-6099  
FAX: 732-942-6033  
www.hunteraccesstechnologies.com

SHEET TITLE:

ARCHITECT:

CONTRACTOR:

SCALE:

DRAWN BY:

DATE:

SHEET NO.

**8**

SECTION

**HA**