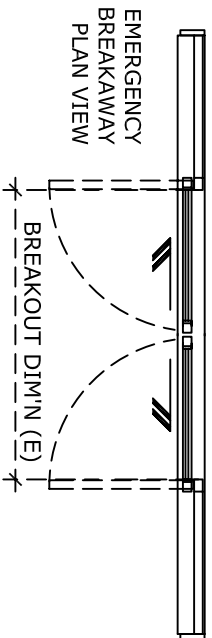
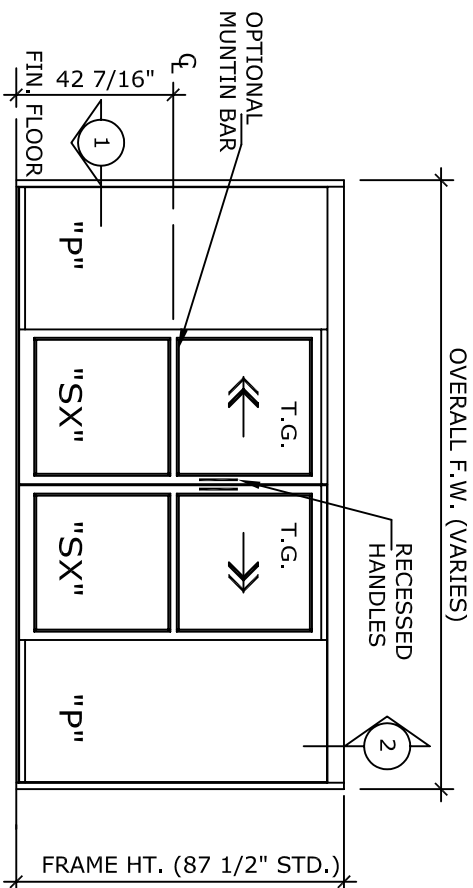


NOTE:
 MANUAL SLIDING DOOR SYSTEM SHALL BE HUNTER "IC-18" AS
 ENGINEERED, MANUFACTURED & ASSEMBLED BY HUNTER ACCESS
 TECHNOLOGIES INC.

STANDARD FINISH: ANODIZED, CLEAR; DARK BRONZE;
 SPECIAL FINISHES ARE AVAILABLE

APPLICATION:
 IC-18-2-SFL. SURFACE MOUNT BI-PART,
 INTENSIVE CARE UNIT SLIDER SYSTEM.



DOOR ELEVATION

UNIT DESCRIPTION

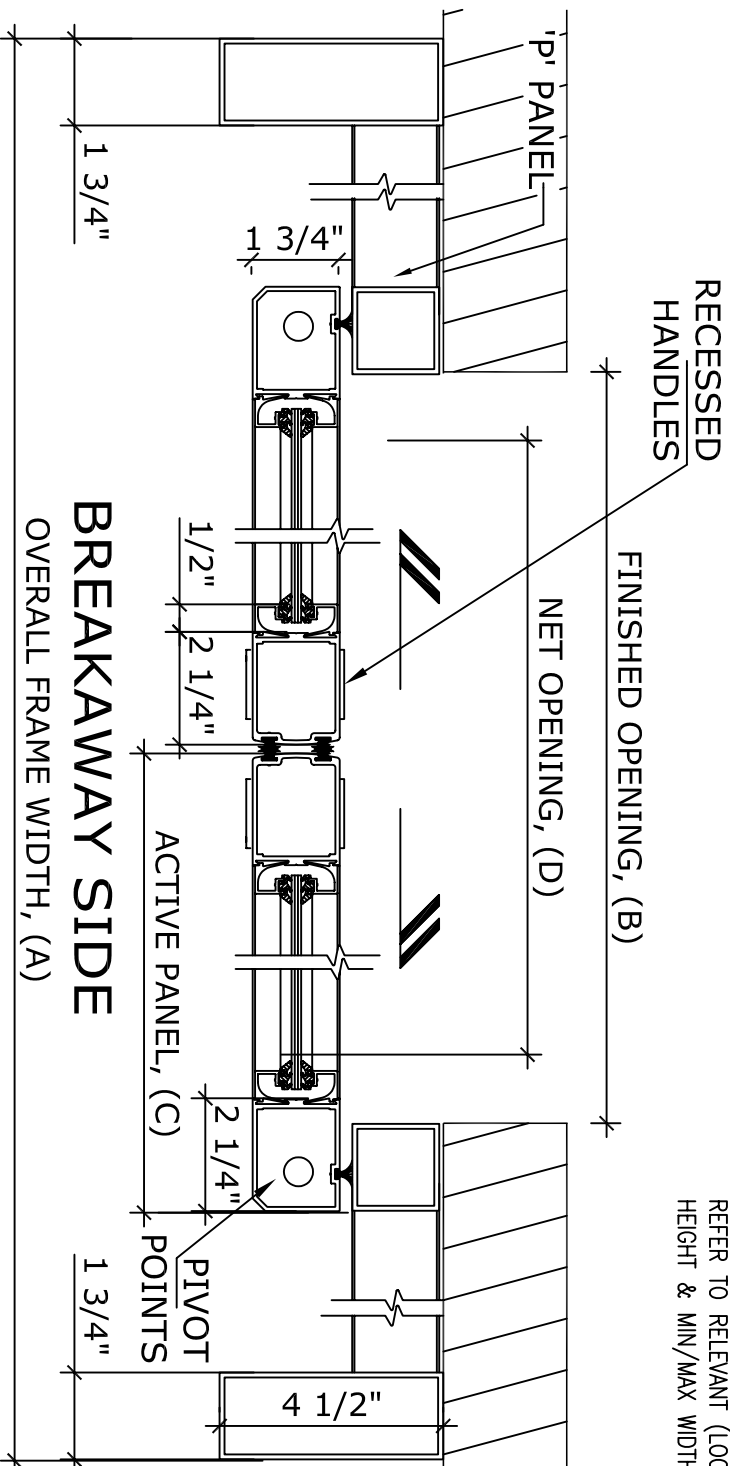
HUNTER IC-18-2-SFL

P-SX-SX-P: SURFACE MOUNT SLIDER WITH 'P' PANEL,
 BI-PART NARROW STYLE MANUAL SLIDING DOOR SYSTEM.

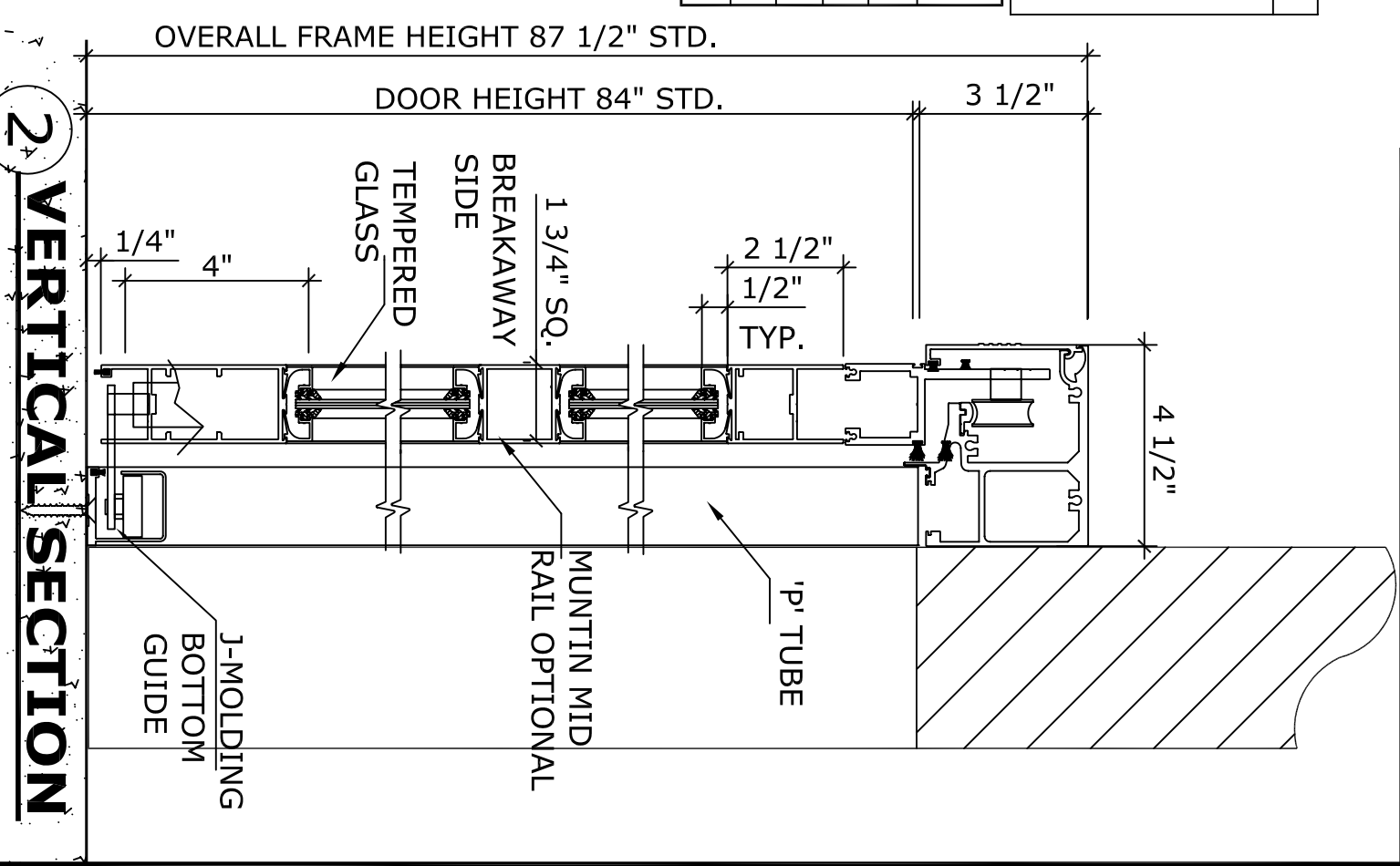
STD. PACKAGE SHALL INCLUDE LOW PROFILE HEADER, FRAME AND
 DOORS WITH MUNTIN, 4" BOTTOM RAILS WITH CONCEALED SWEEP,
 BRUSH-PILE WEATHER STRIPPING, EMERGENCY BREAKAWAY, GLAZING
 STOPS FOR 1/4" T.G. AND RECESSED HANDLES. BOTTOM GUIDE
 IS RECESSED IN 'J' MOLDING OF FIXED 'P' PANELS,

DOOR TYPE:	OVERALL FRAME WIDTH	FINISHED OPENING WIDTH	ACTIVE PANEL WIDTH	NET DOOR OPENING	BREAK OUT DIM'N
IC18-2-SFL-					
SFL-8	96"	44 1/2"	24"	37"	44 1/2"
SFL-10	120"	56 1/2"	30"	49"	56 1/2"
SFL-12	144"	68 1/2"	36"	61"	68 1/2"
SFL-14	168"	80 1/2"	42"	73"	80 1/2"
KEY (INCHES)	2(B+3 1/2)	(A/2-3 1/2)	(B/2+1 3/4)	(B-7 1/2)	(A/2-3 1/2)

REFER TO RELEVANT (LOCAL, STATE, NATIONAL OR AHJ) BUILDING CODE FOR MIN DOOR
 HEIGHT & MIN/MAX WIDTH ALLOWABLE FOR EGRESS REQUIREMENT.



1 HORIZONTAL SECTION



2 VERTICAL SECTION

NOTE:
 HUNTER ACCESS TECHNOLOGIES INC. RESERVES
 THE RIGHT TO CHANGE & IMPROVE IT'S
 PRODUCTS & SPECIFICATIONS WITHOUT NOTICE.

125 KENYON DRIVE
 SUITE #3
 LAKEWOOD, NJ 08701
 TEL. 732-942-6099
 FAX. 732-942-6033
 www.hunteraccesstechnologies.com

SHEET TITLE:	ARCHITECT:	SHEET NO.:
CONTRACTOR:	DRAWN BY:	15
SCALE:	DATE:	SECTION
		IC