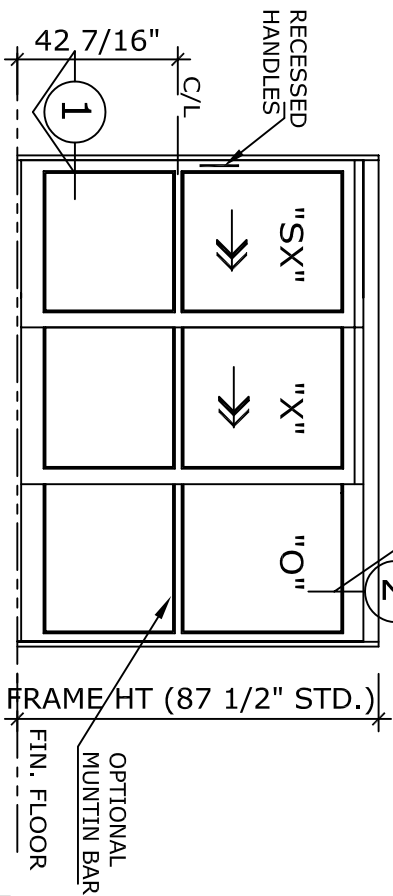
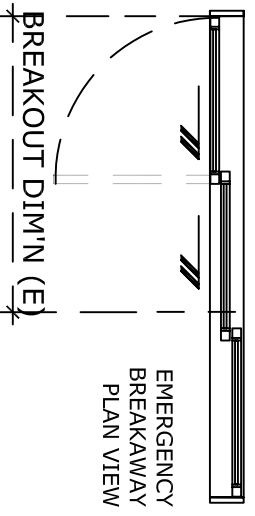


OVERALL FRAME WIDTH (VARIES)



DOOR ELEVATION



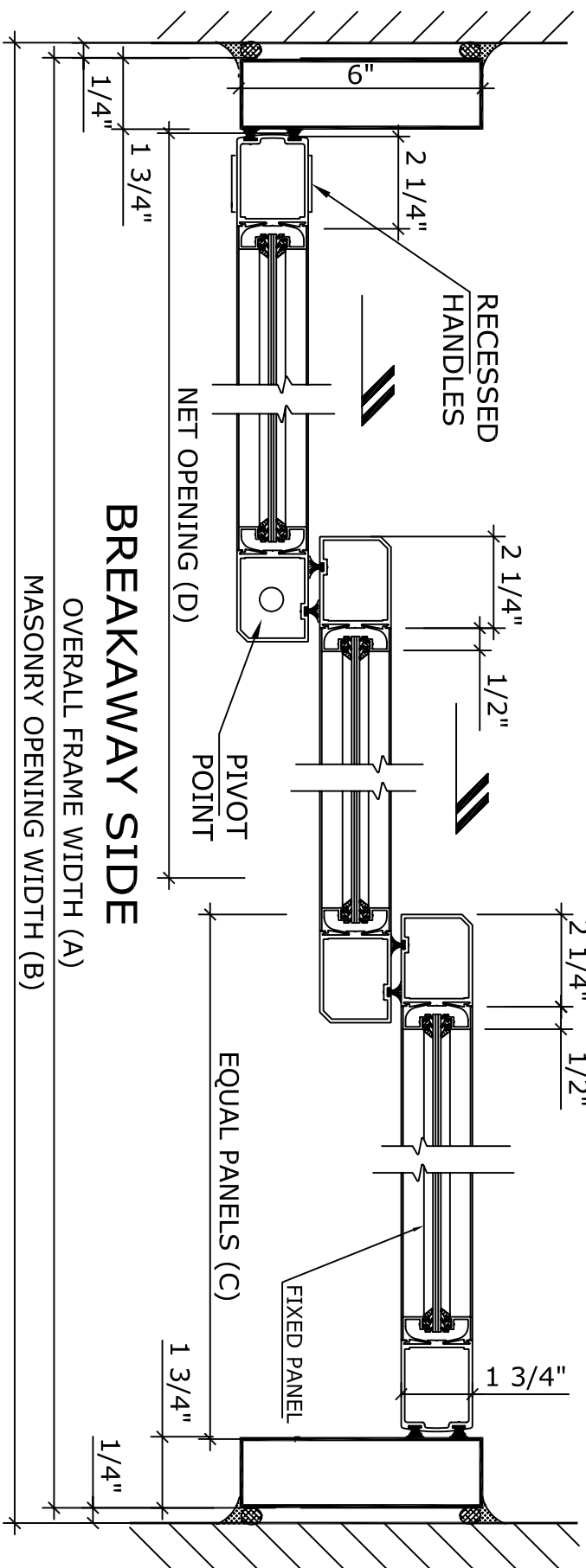
NOTE:
MANUAL SLIDING DOOR SYSTEM SHALL BE HUNTER "IC-18" AS ENGINEERED, MANUFACTURED & ASSEMBLED BY HUNTER ACCESS TECHNOLOGIES INC.

STANDARD FINISH: ANODIZED, CLEAR; DARK BRONZE;
SPECIAL FINISHES ARE AVAILABLE

| UNIT DESCRIPTION | |
|---|--|
| HUNTER IC-18-3-TFLR | |
| SX-X-0 : TELESCOPIC OVERHEAD CONCEALED RIGHT HAND NARROW STILE F.S.L. MANUAL DOOR SYSTEM. | |
| STD. PACKAGE SHALL INCLUDE LOW PROFILE HEADER, FRAME AND DOORS WITH MUNTIN, 4" BOTTOM RAILS WITH CONCEALED SWEEP, BRUSH-PILE WEATHER STRIPPING, EMERGENCY BREAKAWAY, GLAZING STOPS FOR 1/4" T.G. AND RECESSED HANDLES. DOOR GUIDE SYSTEM SHALL BE CONCEALED IN BOTTOM HORIZONTAL RAILS. | |

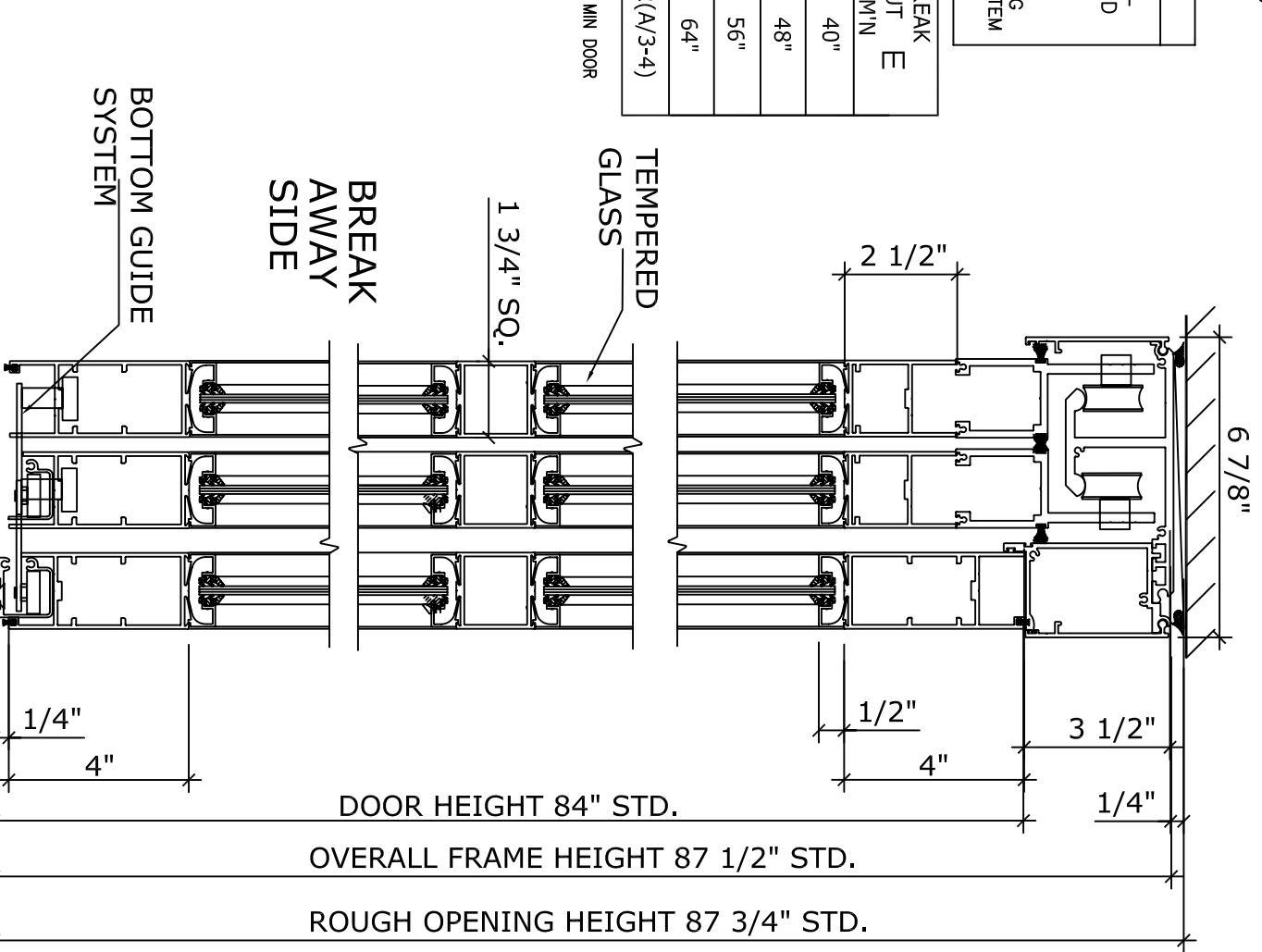
| DOOR TYPE: | OVERALL FRAME A WIDTH | ROUGH OPENING B WIDTH | EQUAL PANELS C WIDTH | NET DOOR D OPENING | BREAK OUT E DIM'N |
|--------------|-----------------------|-----------------------|----------------------|--------------------|-------------------|
| IC18-3-TFLR- | 72" | 72 1/2" | 24 11/16" | 36 1/4" | 40" |
| TFLR-6 | 84" | 84 1/2" | 28 11/16" | 44 1/4" | 48" |
| TFLR-7 | 96" | 96 1/2" | 32 11/16" | 52 1/4" | 56" |
| TFLR-8 | 108" | 108-1/2" | 36 11/16" | 60 1/4" | 64" |
| TFLR-9 | (B-1/2) | (A+1/2) | (A/3+11/16) | 2(A/3-5 7/8) | 2(A/3-4) |

REFER TO RELEVANT (LOCAL, STATE, NATIONAL OR AHJ) BUILDING CODE FOR MIN DOOR HEIGHT & MIN/MAX WIDTH ALLOWABLE FOR EGRESS REQUIREMENT.



1 HORIZONTAL SECTION

APPLICATION:
IC-18-3-TFLR TELESCOPIC FIXED SIDELITE RIGHT HAND, INTENSIVE CARE UNIT SLIDER SYSTEM.



2 VERTICAL SECTION

NOTE:
HUNTER ACCESS TECHNOLOGIES INC. RESERVES THE RIGHT TO CHANGE & IMPROVE IT'S PRODUCTS & SPECIFICATIONS WITHOUT NOTICE.



125 KENYON DRIVE
SUITE #3
LAKEWOOD, NJ 08701
TEL: 732-942-6099
FAX: 732-942-6033
www.hunteraccess technologies.com

| | | | |
|--------------|--|---------------------|--|
| SHEET TITLE: | | SHEET NO. 23 | |
| ARCHITECT: | | SECTION IC | |
| CUSTOMER: | | DRAWN BY | |
| DETAIL SCALE | | DATE | |